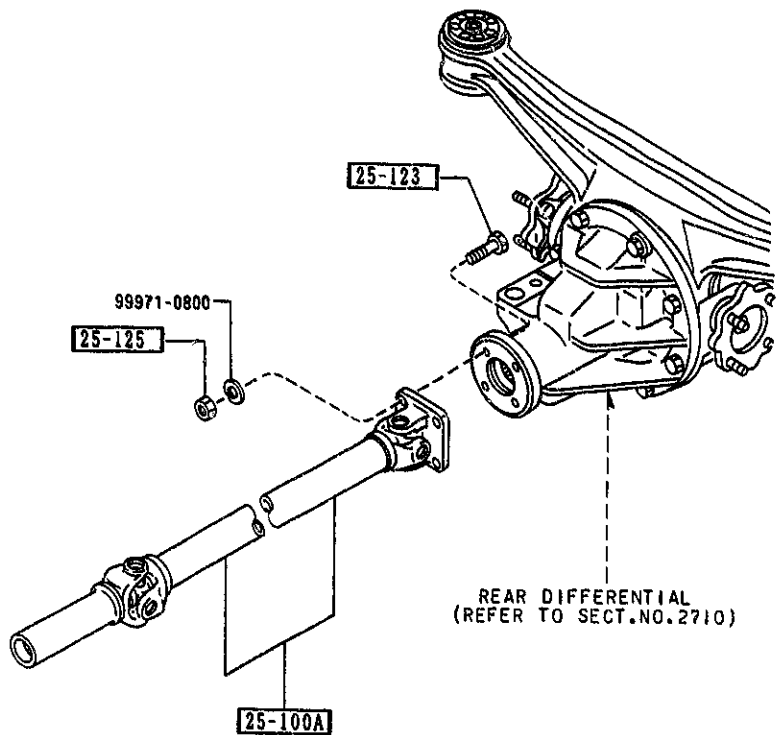


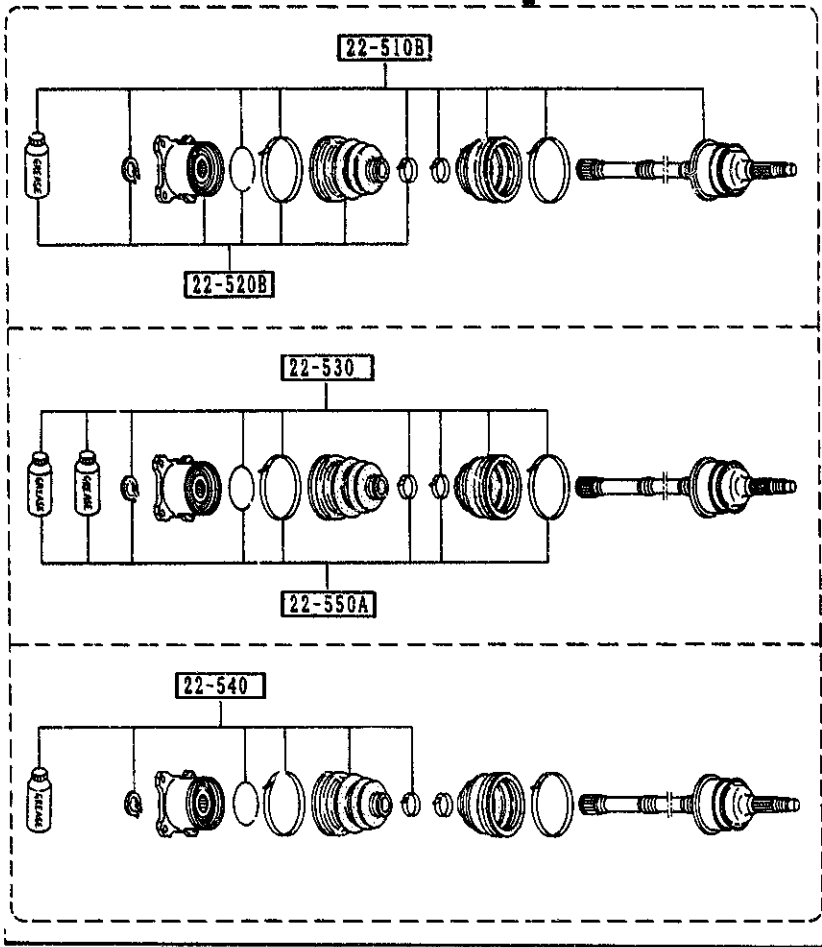
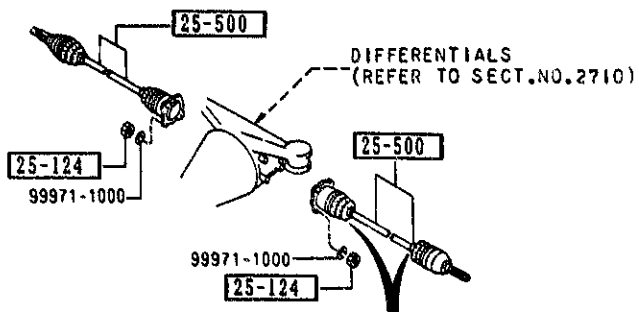
2505 -1 * REAR PROPELLER SHAFT

2505 REAR PROPELLER SHAFT



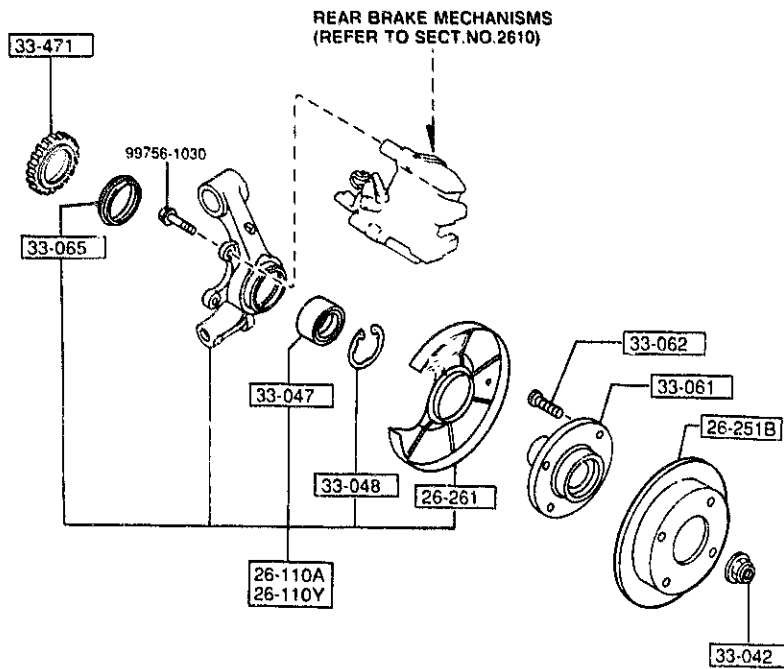
PART NO.	QTY	MODEL/RESTRICTION	MODEL/RESTRICTION	MODEL/RESTRICTION	FROM TO
25-100A		SHAFT, PROPELLER			
M091-25-100	1				
25-123		BOLT			
N010-25-123	4				
25-125		NUT			
1496-25-125	4				

2550 REAR DRIVE SHAFT

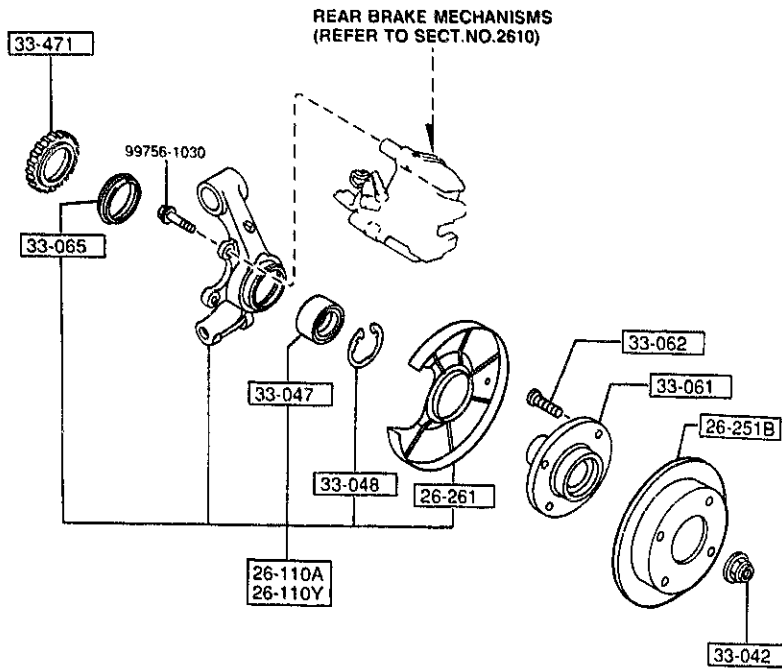


PART NO.	QTY	MODEL/RESTRICTION	MODEL/RESTRICTION	MODEL/RESTRICTION	FROM TO
22-510B		JOINT SET, OUTER			
M090-22-510	2	(W/O A. LOCK BRAKE)			
M091-22-510	2	(A. LOCK BRAKE)			
22-520B		JOINT SET (R), INNER			
M090-22-520	2				
22-530		BOOT SET, OUTER JOINT			
M090-22-530	2				
22-540		BOOT SET, INNER JOINT			
M090-22-540	2				
22-550A		CLIP SET, DRIVE SHAFT			
M090-22-550	2				
25-124		NUT			
1368-25-124	8				
25-500		SHAFT, DRIVE			
M090-25-500	2	(W/O A. LOCK BRAKE)			
M091-25-500	2	(A. LOCK BRAKE)			

1-D11

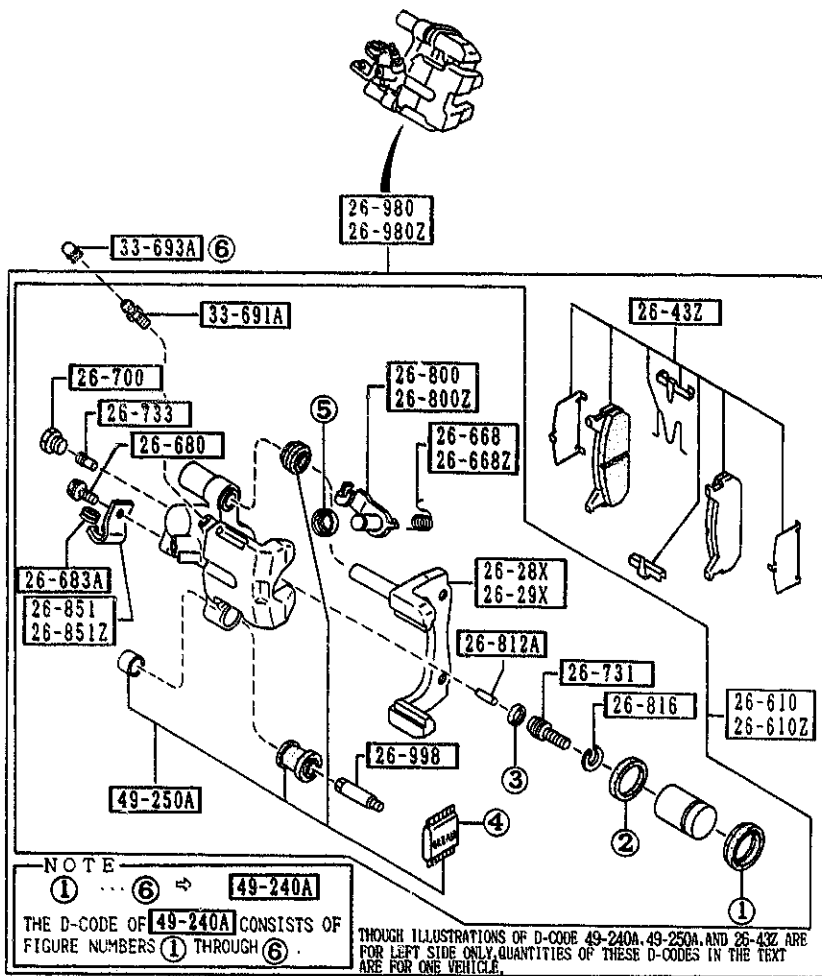


PART NO.	QTY	MODEL/RESTRICTION	MODEL/RESTRICTION	MODEL/RESTRICTION	FROM TO
26-110A		KNUCKLE (R), REAR			
NA01-26-130A	1	(W/O A. LOCK BRAKE)			-2101
NA23-26-130	1	(A. LOCK BRAKE)			-2101
NA01-26-130B	1	(W/O A. LOCK BRAKE)			2101-
NA23-26-130A	1	(A. LOCK BRAKE)			2101-
26-110Y		KNUCKLE (L), REAR			
NA01-26-140A	1	(W/O A. LOCK BRAKE)			-2101
NA23-26-140	1	(A. LOCK BRAKE)			-2101
NA01-26-140B	1	(W/O A. LOCK BRAKE)			2101-
NA23-26-140A	1	(A. LOCK BRAKE)			2101-
26-251B		PLATE, DISC			
NA01-26-251A	2				
26-261		COVER, DUST			
NA01-26-261A	2				
33-042		NUT			
NA01-33-042A		W/WASHER			
A (NA01-33-042B)	2				-0820
NA01-33-042B	2	W/WASHER			0820-
33-047		BEARING, WHEEL			
B455-33-047A	2				-2101
B455-33-047B	2				2101-
33-048		RING, RETAINING-DISC PLATE			
H260-33-048	2				
33-061		HUB, WHEEL			
B455-33-061	2				
33-062		BOLT, HUB			
B455-33-062	8				
33-065		SEAL, OIL-AXLE			
G304-33-065	2				
0820 NA35**-206394					
2101 NA35**-313937					



PART NO.	QTY	MODEL/RESTRICTION	MODEL/RESTRICTION	MODEL/RESTRICTION	FROM TO
33-471		ROTOR, SENSOR-FRT A.B			
B603-33-471	2	.S.			

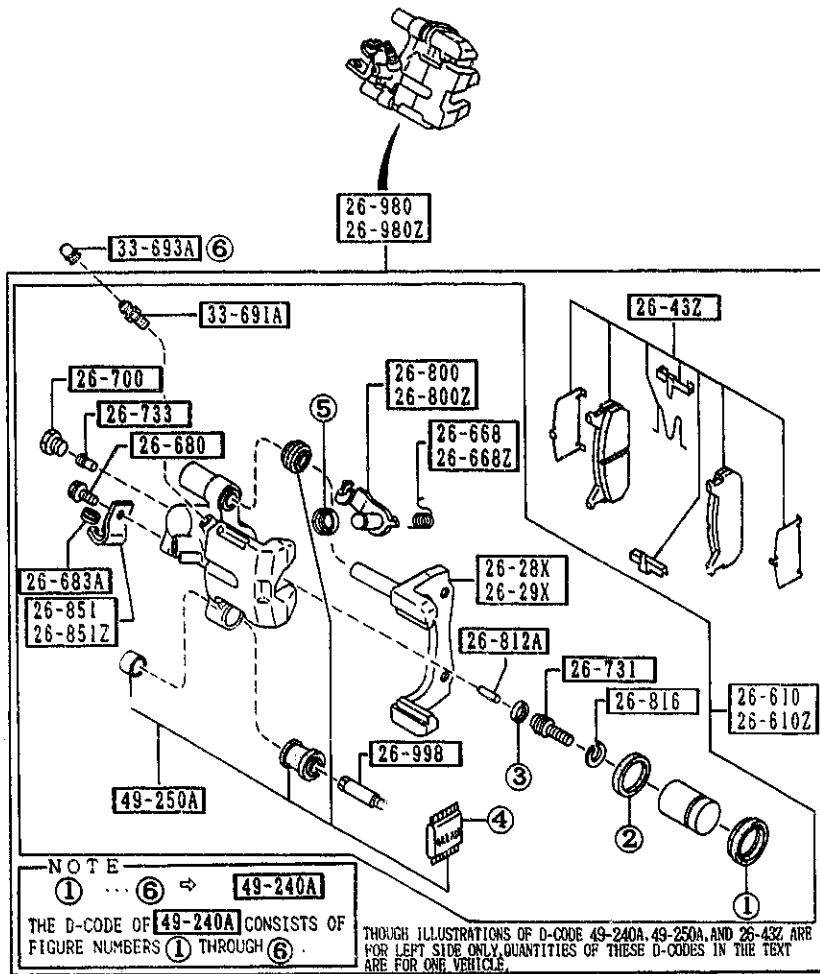
1-F11



PART NO.	QTY	MODEL/RESTRICTION	MODEL/RESTRICTION	MODEL/RESTRICTION	FROM-TO
26-28X		SUPPORT(R), MOUNTING			
NA10-26-28X	1				
26-29X		SUPPORT(L), MOUNTING			
NA10-26-29X	1				
26-43Z		PAD SET, RR CALIPER NON ASBESTOS			
NAY0-26-43Z	1				
26-610		BODY & PISTON(R), CALIPER			
NA01-26-61X	1				
26-610Z		BODY & PISTON(L), CALIPER			
NA01-26-71X	1				
26-668		SPRING(R), LEVER			
BWOH-26-668	1				
26-668Z		SPRING(L), LEVER			
BWOH-26-669	1				
26-680		BOLT			
BWOH-26-680	2				
26-683A		PROTECTOR			
BWOH-26-683	2				
26-700		PLUG, SCREW			
BWOH-26-700	2				
26-731		SPINDLE, ADJUSTER			
BWOH-26-731	2				
26-733		GEAR, ADJUST			
BWOH-26-733	2				
26-800		LEVER(R), OPERATING			
BWOH-26-800	1				
26-800Z		LEVER(L), OPERATING			

2610 REAR BRAKE MECHANISMS

2610 -2 * REAR BRAKE MECHANISMS

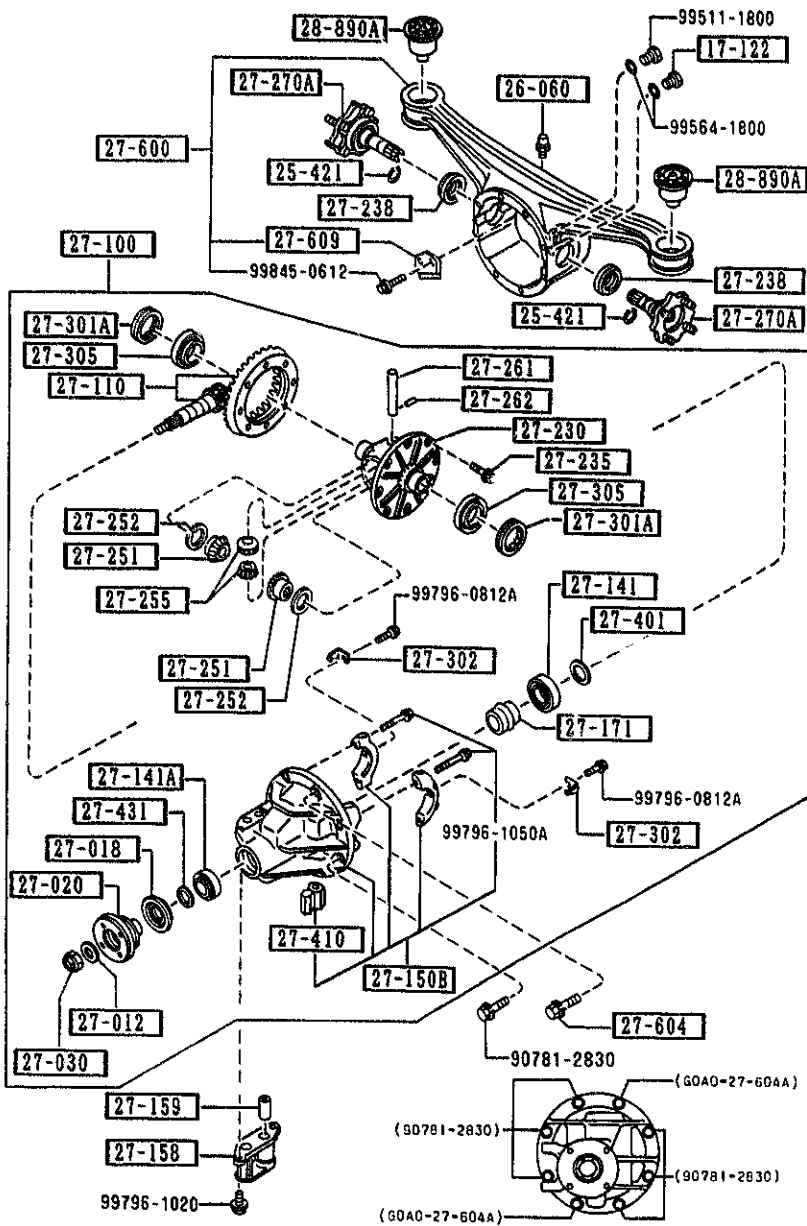


PART NO.	QTY	MODEL/RESTRICTION	MODEL/RESTRICTION	MODEL/RESTRICTION	FROM 10
CONT'D BWOH-26-810	1				
26-812A		ROD, PUSH-FRT CALIPER			
BWOH-26-812	2				
26-816		RING, SNAP-RR CALIPER			
BWOH-26-816	2				-2401
GAZE-26-816	2				2401-
26-851		BRACKET(R), CABLE			
BWOH-26-851	1				
26-851Z		BRACKET(L), CABLE			
BWOH-26-861	1				
26-980		CALIPER(R), RR BRAKE			
NA01-26-980A	1				
26-980Z		C/LIPER(L), RR BRAKE			
NA01-26-990A	1				
26-998		PIN, GUIDE			
BWOH-26-998A	2				
33-691A		SCREW, BLEEDER			
BWOH-26-691	2				
33-693A		CAP, BLEEDER SCREW			
0259-33-693	2				
49-240A		SEAL KIT, CALIPER-RR			
NAY1-26-44Z	1				
49-250A		BOOT KIT, RR CALIPER			
BWYH-26-45Z	1				

2401 NA35**321905

2710 REAR DIFFERENTIALS
(NORMAL DIFF.)

2710 -1 REAR DIFFERENTIALS
(NORMAL DIFF.)



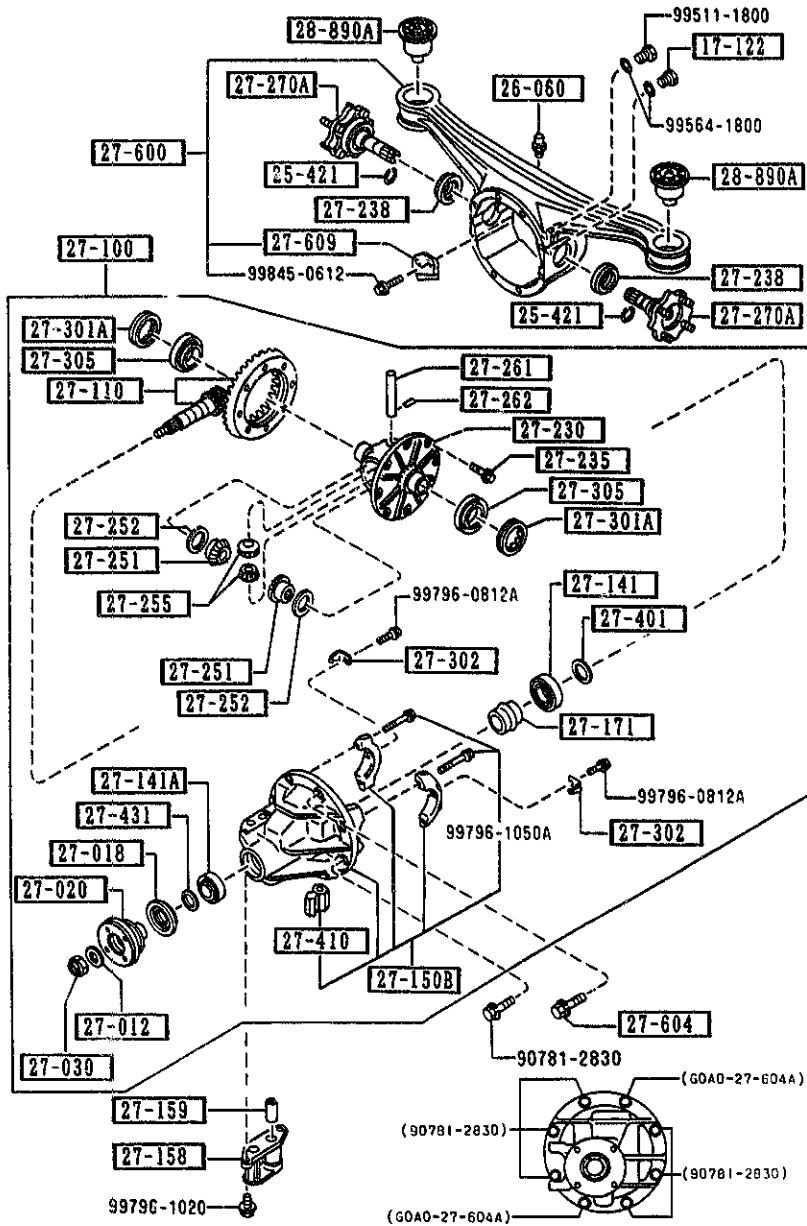
PART NO.	QTY	MODEL/RESTRICTION	MODEL/RESTRICTION	MODEL/RESTRICTION	FROM TO
17-122		PLUG, MAGNET			
0810-17-121	1				
25-421		CLIP			
F001-25-421A	2				-2301
F002-25-421	2				2301-
26-060		BREATHER			
0730-26-060	1				
27-012		WASHER			
3919-27-012	1				
27-018		SEAL, OIL			
T020-27-165	1				
27-020		FLANGE, COMPANION			
T002-27-120B	1				
27-030		NUT, LOCK			
3919-27-130	1				
27-100		DRIVING & DIFF.			
T020-27-100K C (T020-27-100L)	1				-2301
T020-27-100L	1				2301-
27-110		GEAR SET, FINAL			
T020-27-110B C (T020-27-110C)	1	R=4.300			-2301
T020-27-110C	1	R=4.300			2301-
27-141		BEARING, PINION			
0755-27-210	1				
27-141A		BEARING, PINION			
3919-27-220	1				
27-150B		CARRIER, DIFFERENTIAL -FRT			
T020-27-150D A (T020-27-150E)	1				-2301
T020-27-100K C T020-27-100L T020-27-600G		T006-27-403 T006-27-404 T006-27-405	T006-27-412 T006-27-413 T006-27-414	2301 NA35**-319568	
T020-27-110B C T020-27-110C T020-27-150E T006-27-401 T006-27-402		T006-27-406 T006-27-407 T006-27-408 T006-27-409 T006-27-411	T006-27-415		

AUNA02

CAT. AUNA02-07

1993-12

2710 REAR DIFFERENTIALS
(NORMAL DIFF.)

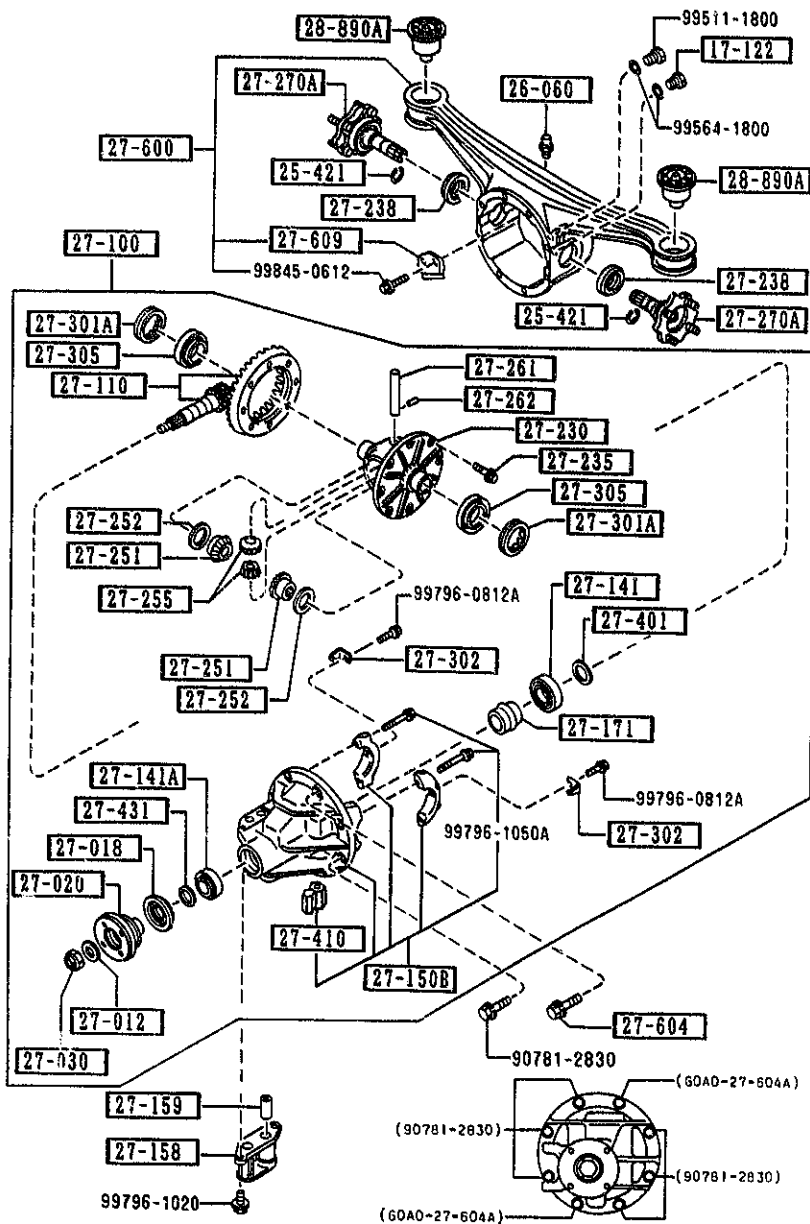


2710 -2 REAR DIFFERENTIALS
(NORMAL DIFF.)

PART NO.	QTY	MODEL/RESTRICTION	MODEL/RESTRICTION	MODEL/RESTRICTION	FROM TO
CONT'D					
T020-27-150E	1				2301-
27-158		SPACE			
T020-27-158A	1				
27-159		PIN, TUBULAR			
T020-27-159A	1				
27-171		PIECE, DISTANCE			
T020-27-171	1				
27-230		CASE			
T005-27-231	1				
27-235		BOLT, RING GEAR			
3919-27-235	8	D=10.2MM			
3919-27-236	8	D=10MM			
27-238		SEAL, OIL			
T020-27-238	2				
27-251		GEAR, DIFF. SIDE			
F035-27-251	2				
27-252		WASHER			
F001-27-252	2	T=2MM			
F001-27-253	2	T=2.1MM			
F001-27-254	2	T=2.2MM			
27-255		PINION, DIFFERENTIAL			-1501
T020-27-255	2				
AN(T020-27-255A)					1501-
T020-27-255A	2				
27-261		SHAFT, DIFF. PINION			
F001-27-261A	1				
1501 NA35**	233754				
2301 NA35**	3 1568				

2710 REAR DIFFERENTIALS
(NORMAL DIFF.)

2710 -3 REAR DIFFERENTIALS
(NORMAL DIFF.)



PART NO.	QTY	MODEL/RESTRICTION	MODEL/RESTRICTION	MODEL/RESTRICTION	FROM-TO
27-262		PIN			
0114-27-262	1				
27-270A		SHAFT, OUTPUT			
T005-27-270B	2				-2301
T005-27-270C	2				2301-
27-301A		SCREW, ADJUST			
0180-27-301A	2				
27-302		PLATE, LOCK			
0290-27-302	2				
27-305		BEARING			
0249-27-350	2				
27-401		SPACER			
0259-27-401	1	T=3.08MM			-2301
0259-27-402	1	T=3.11MM			-2301
0259-27-403	1	T=3.14MM			-2301
0259-27-404	1	T=3.17MM			-2301
0259-27-405	1	T=3.2MM			-2301
0259-27-406	1	T=3.23MM			-2301
0259-27-407	1	T=3.26MM			-2301
0259-27-408	1	T=3.29MM			-2301
0259-27-409	1	T=3.32MM			-2301
0259-27-411	1	T=3.35MM			-2301
0259-27-412	1	T=3.38MM			-2301
0259-27-413	1	T=3.41MM			-2301
0259-27-414	1	T=3.44MM			-2301
2301 NA35**319568					

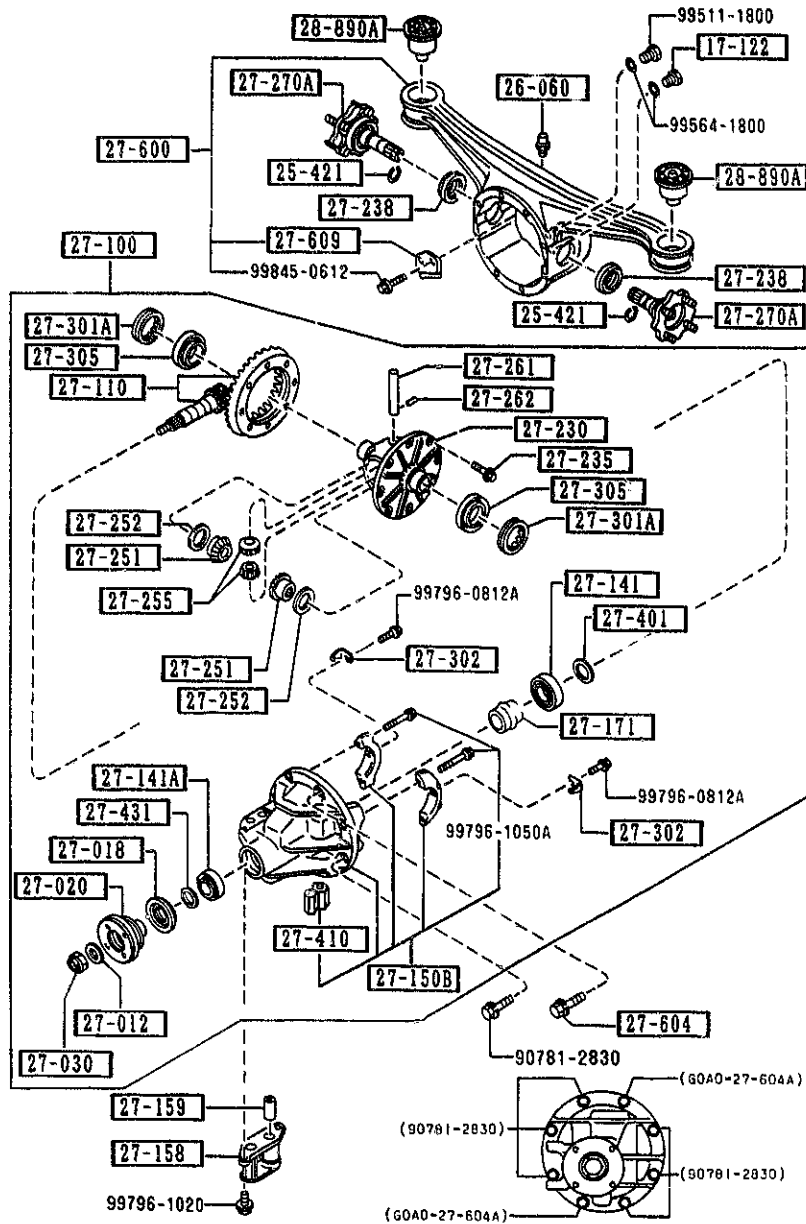
AUNA02

CAT. AUNA02-07

1993-12

1-K11

2710 REAR DIFFERENTIALS
(NORMAL DIFF.)



2710 -5 * REAR DIFFERENTIALS
(NORMAL DIFF.)

PART NO.	QTY	MODEL/RESTRICTION	MODEL/RESTRICTION	MODEL/RESTRICTION	FROM-TO
CONT'D					
MT027-27-410	1	L=51.025			
*T028-27-410	1	L=51.050			
27-431		SPACER			
T001-27-431	1				-2701
TA01-27-431	1				2701-
27-600		CASING, DIFFERENTIAL			
T020-27-600F A (T020-27-600G)	1				-2301
T020-27-600G	1				2301-
27-604		BOLT, CARRIER			
G0A0-27-604A	2				
27-609		PLATE, BAFFLE-DIFF CASING			
M0A1-27-609A	1				-0801
T025-27-609	1				0801-
28-890A		RUBBER, SUB FRAME MTG			
NA01-28-890	2				
0801 NA35** - 205068					
2301 NA35** - 319568					

AUNA02

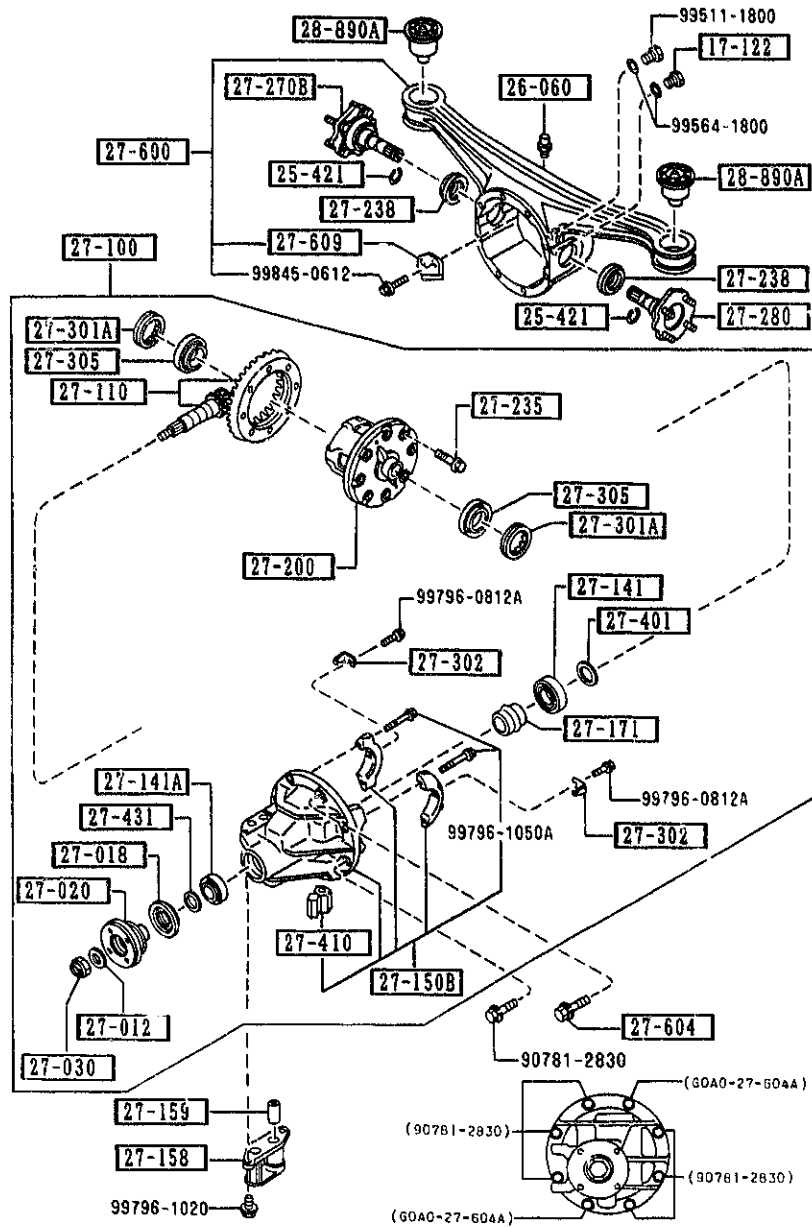
CAT. AUNA02-07

1993-12

1-M11

2710 A REAR DIFFERENTIALS
(LIMITED SLIP DIFF.)

2710 A-1 REAR DIFFERENTIALS
(LIMITED SLIP DIFF.)



PART NO.	QTY	MODEL/RESTRICTION	MODEL/RESTRICTION	MODEL/RESTRICTION	FROM-TO
17-122		PLUG, MAGNET			
0810-17-121	1				
25-421		CLIP			
F001-25-421A	2				-2301
F002-25-421	2				2301-
26-060		BREATHER			
0730-26-060	1				
27-012		WASHER			
3919-27-012	1				
27-018		SEAL, OIL			
T020-27-165	1				
27-020		FLANGE, COMPANION			
T002-27-120B	1				
27-030		NUT, LOCK			
3919-27-130	1				
27-100		DRIVING & DIFF.			
T025-27-100J	1				-2301
T025-27-100L	1				2301-
27-110		GEAR SET, FINAL			
T020-27-110B C (T020-27-110C)	1	R=4.300			-2301
T020-27-110C	1	R=4.300			2301-
27-141		BEARING, PINION			
0755-27-210	1				
27-141A		BEARING, PINION			
3919-27-220	1				
27-150B		CARRIER, DIFFERENTIAL -FRT			
T020-27-150D A (T020-27-150E)	1				-2301
T020-27-110B C T020-27-150E		T006-27-406 T006-27-407 T006-27-408	T006-27-415	2301 NA35**	319568
T006-27-401 T006-27-402 T006-27-403 T006-27-404 T006-27-405		T006-27-409 T006-27-411 T006-27-412 T006-27-413 T006-27-414			

AUNA02

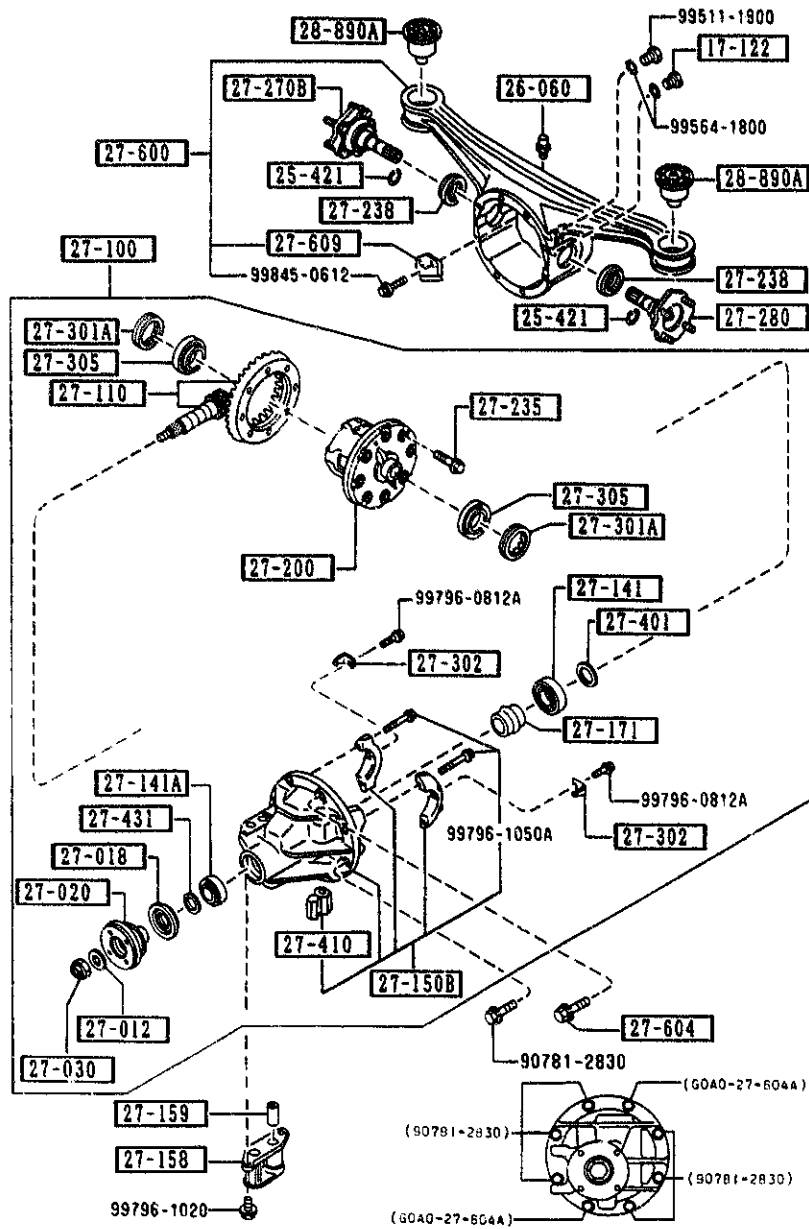
CAT. AUNA02-07

1993-12

1-N11

2710 A REAR DIFFERENTIALS
(LIMITED SLIP DIFF.)

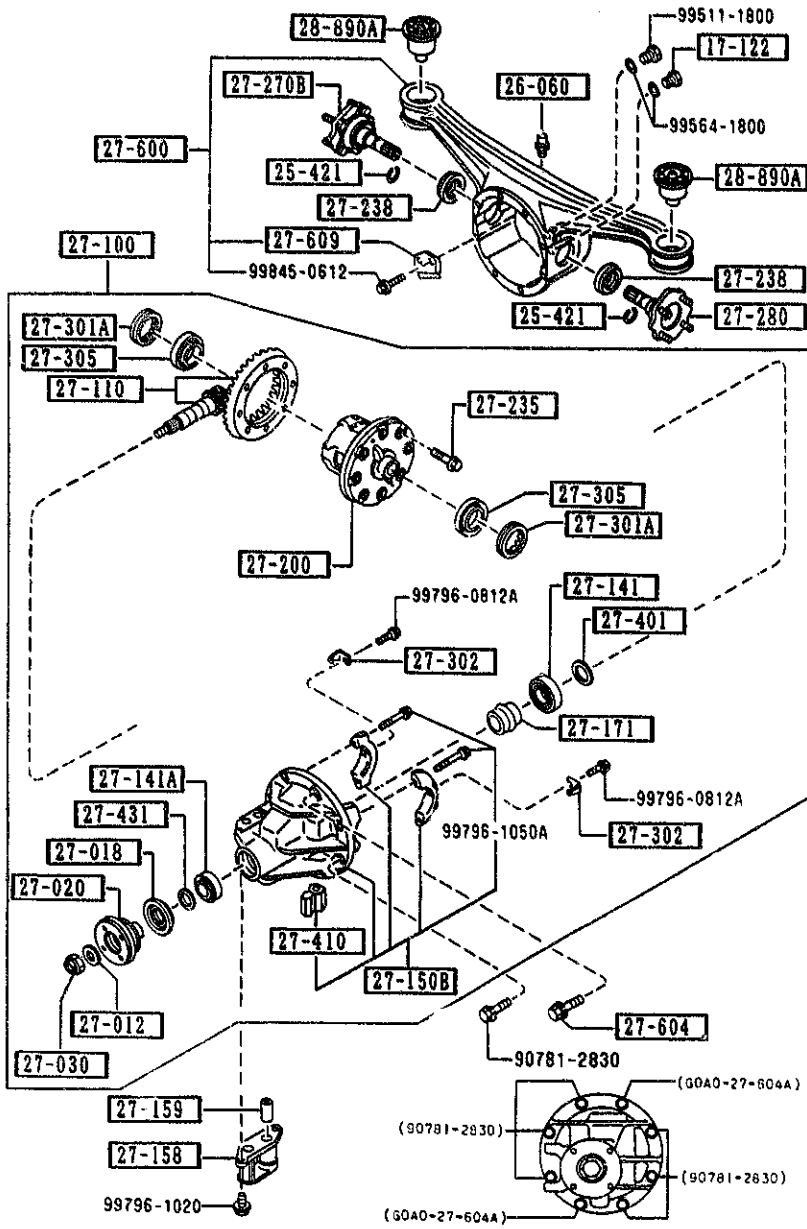
2710 A-4 REAR DIFFERENTIALS
(LIMITED SLIP DIFF.)



PART NO.	QTY	MODEL/RESTRICTION	MODEL/RESTRICTION	MODEL/RESTRICTION	FROM TO
CONT'D					
T006-27-409	1	T=2.32MM			2301-
T006-27-411	1	T=2.35MM			2301-
T006-27-412	1	T=2.38MM			2301-
T006-27-413	1	T=2.41MM			2301-
T006-27-414	1	T=2.44MM			2301-
T006-27-415	1	T=2.47MM			2301-
27-410		SPACER			
*T020-27-410	1	L=50.850			
*T021-27-410	1	L=50.875			
*T022-27-410	1	L=50.900			
*T023-27-410	1	L=50.925			
*T024-27-410	1	L=50.950			
*T025-27-410	1	L=50.975			
*T026-27-410	1	L=51.000			
*T027-27-410	1	L=51.025			
*T028-27-410	1	L=51.050			
27-431		SPACER			
T001-27-431	1				-2701
TA01-27-431	1				2701-
27-600		CASING, DIFFERENTIAL			
T020-27-600F A (T020-27-600G)	1				-2301
T020-27-600G	1				2301-
27-604		BOLT, CARRIER			
GOA0-27-604A	2				
2301 NA35**319568					

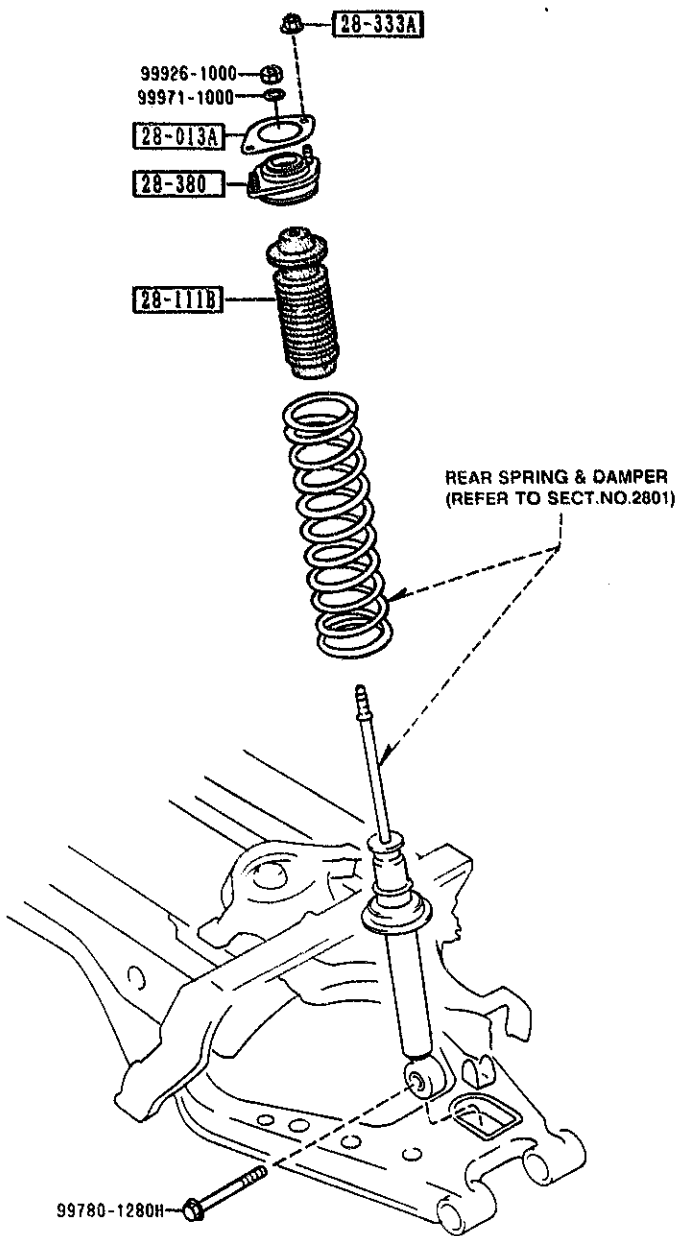
2710 A REAR DIFFERENTIALS
(LIMITED SLIP DIFF.)

2710 A-5 * REAR DIFFERENTIALS
(LIMITED SLIP DIFF.)



PART NO.	QTY	MODEL/RESTRICTION	MODEL/RESTRICTION	MODEL/RESTRICTION	FROM TO
27-609	1	PLATE,BAFFLE-DIFF CA SING			-0801
MOA1-27-609A	1				0801-
T025-27-609	1				
28-890A	2	RUBBER,SUB FRAME MTG			
NA01-28-890	2				
0801 NA35**-205068					

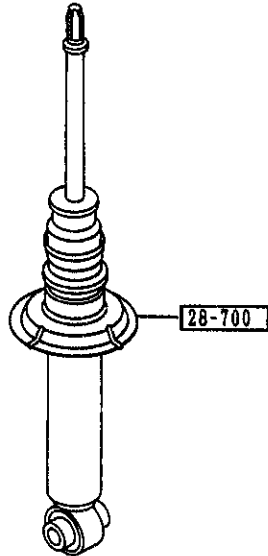
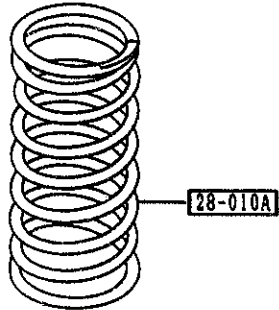
2800 REAR SUSPENSION MECHANISMS



PART NO.	QTY	MODEL/RESTRICTION	MODEL/RESTRICTION	MODEL/RESTRICTION	FROM-TO
28-013A		SHEET, RUBBER			
G030-28-013A	2				
28-111B		STOPPER, BUMP			
NA01-28-111	2				
28-333A		NUT, FLANGE			
H001-28-333	4				
28-380		RUBBER, MOUNTING			
NA01-28-380A A (NA01-28-380B)	2				-2310
NA01-28-380B	2				2310-
2310 NA35**-319561					

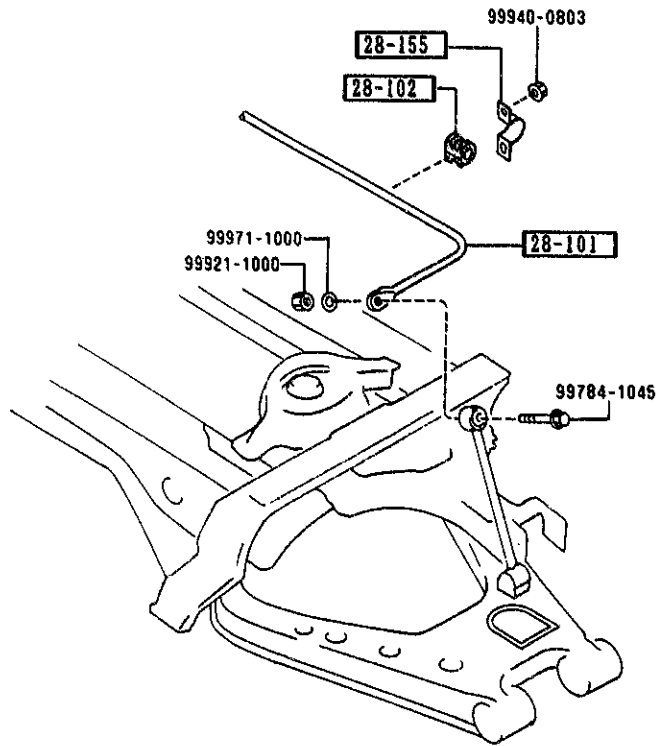
2801 -1 * REAR SPRING & DAMPER

2801 REAR SPRING & DAMPER



PART NO.	QTY	MODEL/RESTRICTION	MODEL/RESTRICTION	MODEL/RESTRICTION	FROM-TO
28-010A		SPRING, COIL-REAR			
NA01-28-011B A (NA01-28-011C)	2				-1C01
NA03-28-011 A (NA03-28-011A)	2				-1C01
NA01-28-011C	2	(MT)			1C01-
NA03-28-011A	2	(AT)			1C01-
28-700		DAMPER, REAR			
NA01-28-700	2				
1C01 NA35**-309801					

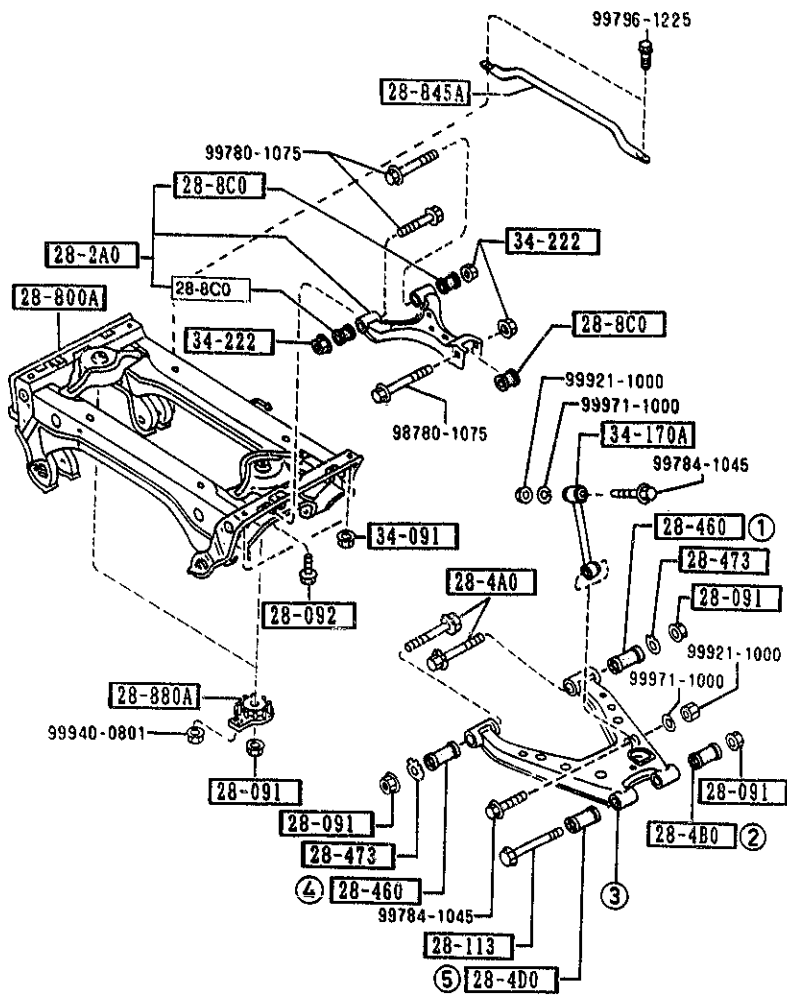
2810 REAR STABILIZER



PART NO.	QTY	MODEL/RESTRICTION	MODEL/RESTRICTION	MODEL/RESTRICTION	FROM-TO
28-101 NA01-28-151A	1	STABILIZER, RR			
28-102 FB01-28-156	2	BUSH, STABILIZER-RR			
28-155 FB01-28-155	2	PLATE, STABILIZER-RR			

2830 REAR LOWER ARMS & SUB FRAME

2830 -1 REAR LOWER ARMS & SUB FRAME

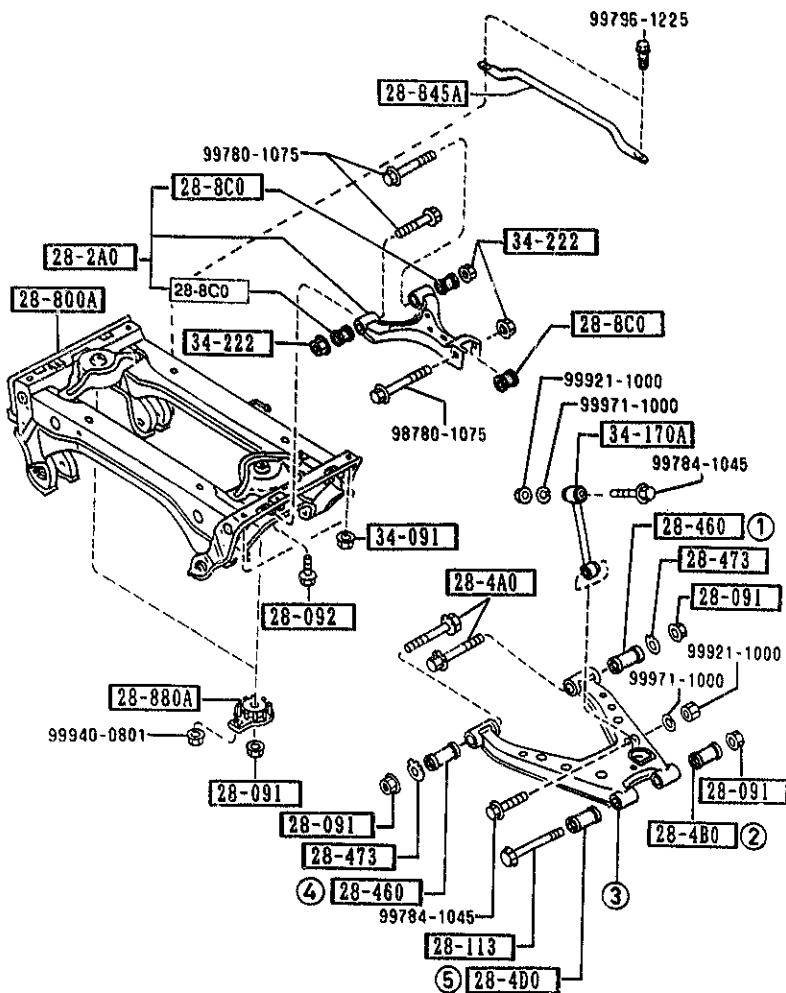


NOTE
 ① ... ⑤ ⇒ 28-300
 28-300Z
 THE D-CODE OF 28-300 CONSISTS OF
 28-300Z
 FIGURE NUMBERS ① THROUGH ⑤.

PART NO.	QTY	MODEL/RESTRICTION	MODEL/RESTRICTION	MODEL/RESTRICTION	FROM-TU
28-091		NUT			
B037-28-091	8				
28-092		BOLT, CONTROL LINK			
NA01-28-092	2				
28-113		BOLT			
NA01-28-113	2				
28-2A0		ARM, UPPER-REAR			
NA01-28-2A0B	2				
28-300		ARM(R), LOWER-REAR			
NA01-28-300	1				
28-300Z		ARM(L), LOWER-REAR			
NA01-28-350	1				
28-4A0		BOLT, ADJUST			
NA01-28-4A0	4				
28-4B0		BUSHING, RUBBER-LOWER ARM			
NA01-28-4B0	2				
28-4D0		BUSHING, RUBBER-LOWER ARM			
NA01-28-4D0	2				
28-460		BUSHING, LOWER ARM			
NA01-28-460	4				
28-473		PLATE, CAM-SUB FRAME			
NA01-28-473	4				
28-8C0		BUSHING, RUBBER			
NA01-28-8C0B	6				
28-800A		MEMBER, CROSS			
NA23-28-800	1				-1801
N007-28-800C A (N007-28-800D)	1				1801-2101
N007-28-800D	1				2101-

1801 NA35**235561
 2101 NA35**313937

2830 REAR LOWER ARMS & SUB FRAME

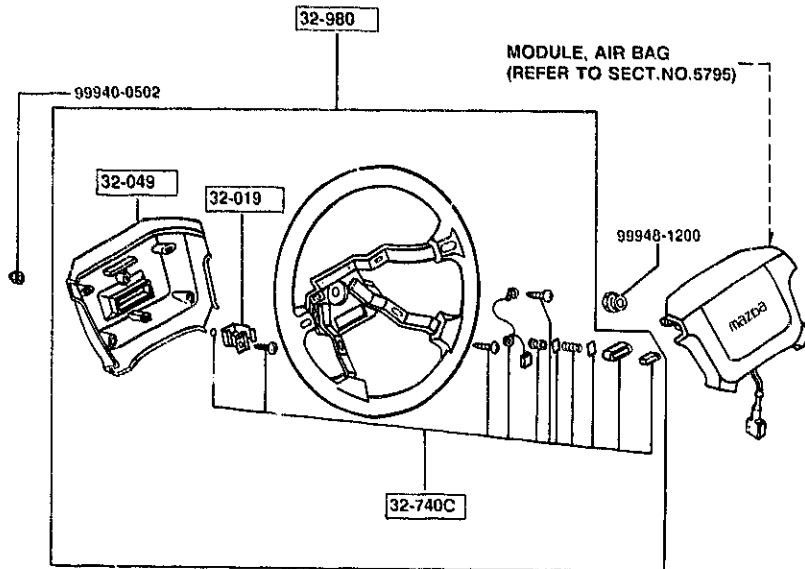


NOTE
 ① ... ⑤ ⇒ 28-300
 28-300Z
 THE D-CODE OF 28-300 CONSISTS OF
 28-300Z
 FIGURE NUMBERS ① THROUGH ⑤.

PART NO.	QTY	MODEL/RESTRICTION	MODEL/RESTRICTION	MODEL/RESTRICTION	FROM-TO
28-845A N007-28-845A	1	BAR, REAR SUSPENSION			1801-
28-880A NA01-28-880B	2	WASHER, STOP			
34-091 FB01-34-091	4	NUT			
34-170A NA01-34-170	2	LINK, CONTROL-STAB			
34-222 8871-34-222	6	NUT			
1801 NA35**~235561					

3200 STEERING WHEEL

3200 -1 * STEERING WHEEL



PART NO.	QTY	MODEL/RESTRICTION	MODEL/RESTRICTION	MODEL/RESTRICTION	FROM-TO
32-019		BRACKET, COUPLER			
NA01-32-019	1				
32-049		COVER, WHEEL CORE			
NA01-32-049	1				
32-740C		PARTS SET, ST. WHEEL			
NA01-32-750	1				
32-980		BOSS, STEERING WHEEL			
NA01-32-980B A (NA01-32-980C)	1				-2417
NA02-32-980B A (NA02-32-980C)	1				-2417
*NA01-32-980C	1	BASE, (URETHANE)			2417-
*NA02-32-980C	1	PKG-OPT, V-SPECIAL, (LEATHER)			2417-
2417 NA35**324605					

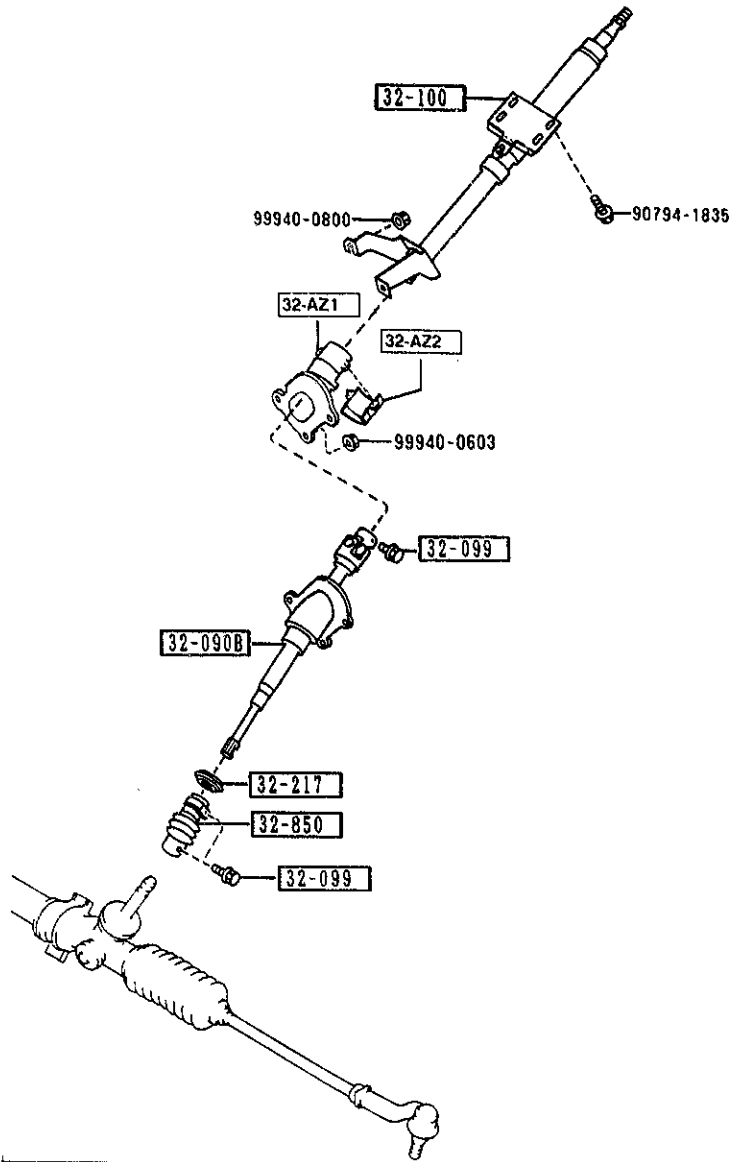
AUNA02

CAT. AUNA02-07

1993-12

3210 STEERING COLUMN & SHAFTS

3210 -1 * STEERING COLUMN & SHAFTS



PART NO.	QTY	MODEL/RESTRICTION	MODEL/RESTRICTION	MODEL/RESTRICTION	FROM-TO
32-AZ1		COVER, JOINT-UPPER			
NA01-32-AZ1B	1				
32-AZ2		COVER, JOINT-LOWER			
NA01-32-AZ2A	1				
32-090B		SHAFT, INTERMED.			
NA01-32-090B	1 (W/O P.S.)				-1C01
NA02-32-090B	1 (W/P.S.)				-1C01
NA01-32-090C	1 (W/O P.S.)				1C01-
NA02-32-090C	1 (W/P.S.)				1C01-
32-099		BOLT, SHAFT			
B455-32-099	3				
32-100		SHAFT, ENGY. ABSORBER			
NA01-32-100B	1				
32-217		GROMMET			
NA01-32-217	1				
32-850		JOINT, STEERING			
NA01-32-850	1				-1C01
NA01-32-850A	1				1C01-
1C01 NA35**-309801					

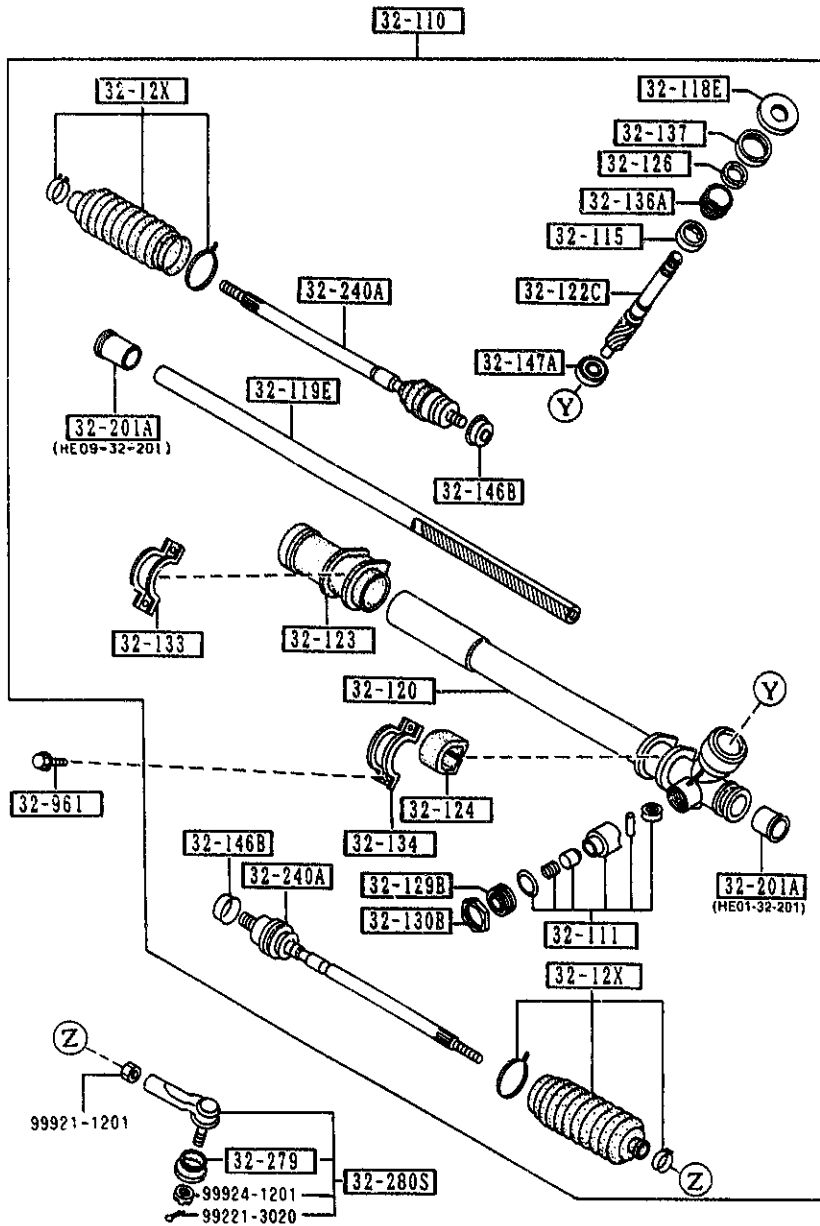
AUNA02

CAT. AUNA02-07

1993-12

1-M12

3220

STEERING GEAR
(W/O POWER STEERING)3220 -2 * STEERING GEAR
(W/O POWER STEERING)

PART NO.	QTY	MODEL/RESTRICTION	MODEL/RESTRICTION	MODEL/RESTRICTION	FROM TO
32-134		PLATE, CLAMP			
NA01-32-134	1				
32-136A		COVER, REAR			
G030-32-136	1				
32-137		NUT, LOCK			
S030-32-137	1				
32-146B		WASHER			
HA14-32-146	2				
32-147A		BEARING, PINION			
G030-32-147	1				
32-201A		BUSHING, RACK-ST. GEAR			
HE01-32-201	1				
HE09-32-201	1				
32-240A		JOINT, BALL			
NA01-32-240	2				
32-279		SEAL, DUST-BALL JOINT			
B455-32-279	2				
32-280S		JOINT SET, BALL			
8AN1-32-280	2				
32-961		BOLT			
G030-32-961	4				

AUNA02

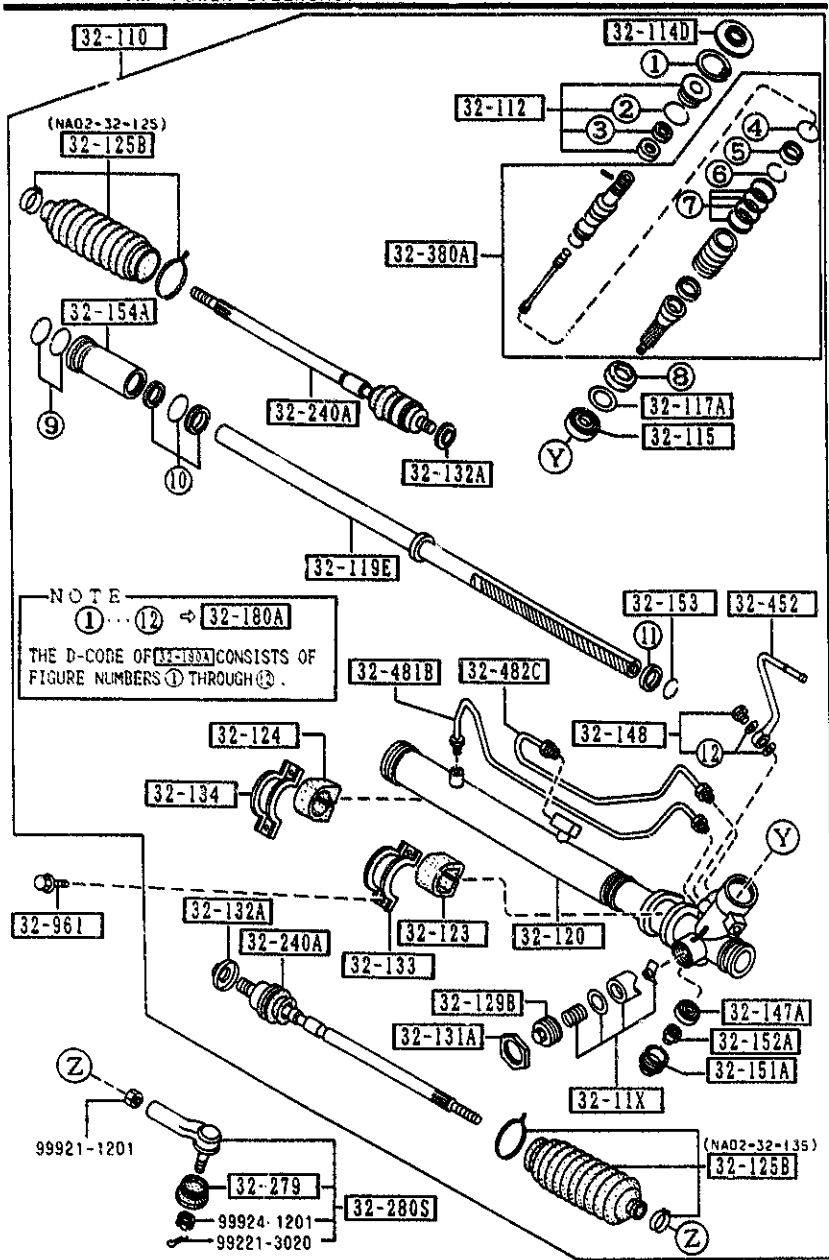
CAT. AUNA02-07

1993-12

1-C13

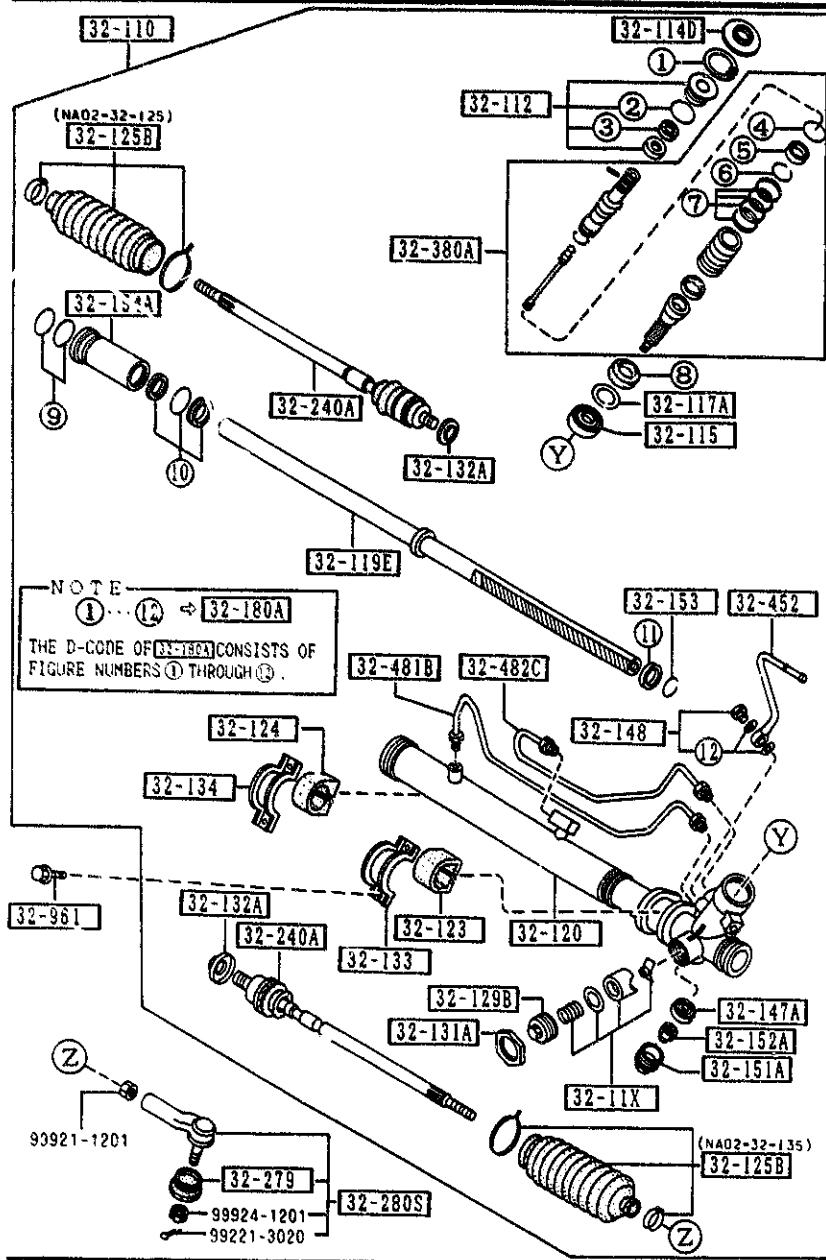
3220 A STEERING GEAR
(W/ POWER STEERING)

3220 A-1 STEERING GEAR
(W/ POWER STEERING)



PART NO.	QTY	MODEL/RESTRICTION	MODEL/RESTRICTION	MODEL/RESTRICTION	FROM-TO
32-11X		YOKE SET, SUPPORT-ST. GEAR			
NAO2-32-11X	1				
32-110		GEAR, STEERING			
NAO2-32-110	1				
32-112		COVER, DUST			
NAO2-32-112	1				
32-114D		COVER, DUST-ST. GEAR			
NAO2-32-114	1				
32-115		BEARING, ST. GEAR			
NAO2-32-115	1				
32-117A		SPACER, STEERING GEAR			
NAO2-32-121	1				
32-119E		RACK, STEERING GEAR			
NAO2-32-119	1				
32-120		HOUSING, GEAR			
NAO2-32-120	1				
32-123		RUBBER, MOUNTING			
NAO2-32-123	1				
32-124		RUBBER, MOUNTING			
NAO2-32-124	1				
32-125B		BOOT, RACK			
NAO2-32-125	1				
NAO2-32-135	1				
32-129B		PLUG, PINION			
NAO2-32-129	1				
32-151A		NUT, LOCK-RACK			
NAO2-32-131	1				

3220 A STEERING GEAR
(W/ POWER STEERING)



3220 A-2 STEERING GEAR
(W/ POWER STEERING)

PART NO.	QTY	MODEL/RESTRICTION	MODEL/RESTRICTION	MODEL/RESTRICTION	FROM 10
32-132A		WASHER			
NA02-32-126	2				
32-133		PLATE, CLAMP			
NA02-32-133	1				
32-134		PLATE, CLAMP			
NA02-32-134	1				
32-147A		BEARING, PINION			
NA02-32-147	1				
32-148		EYE BOLT KIT, ST. GEAR			
0002-32-148	1				
32-151A		PLUG, PINION-ST. GEAR			
NA02-32-151	1				
32-152A		NUT, ADJUST			
NA02-32-152	1				
32-153		RING, BACK UP			
NA02-32-153	1				
32-154A		HOLDER, STEERING GEAR			
NA02-32-154	1				
32-180A		SEAL KIT, ST. GEAR			
NA02-32-180	1				
32-240A		JOINT, BALL			
NA02-32-240	2				
32-279		SEAL, DUST-BALL JOINT			
B455-32-279	2				
32-280S		JOINT SET, BALL			
8AN1-32-280	2				
32-380A		VALVE, ST. GEAR			
NA02-32-380	1				

AUNA02

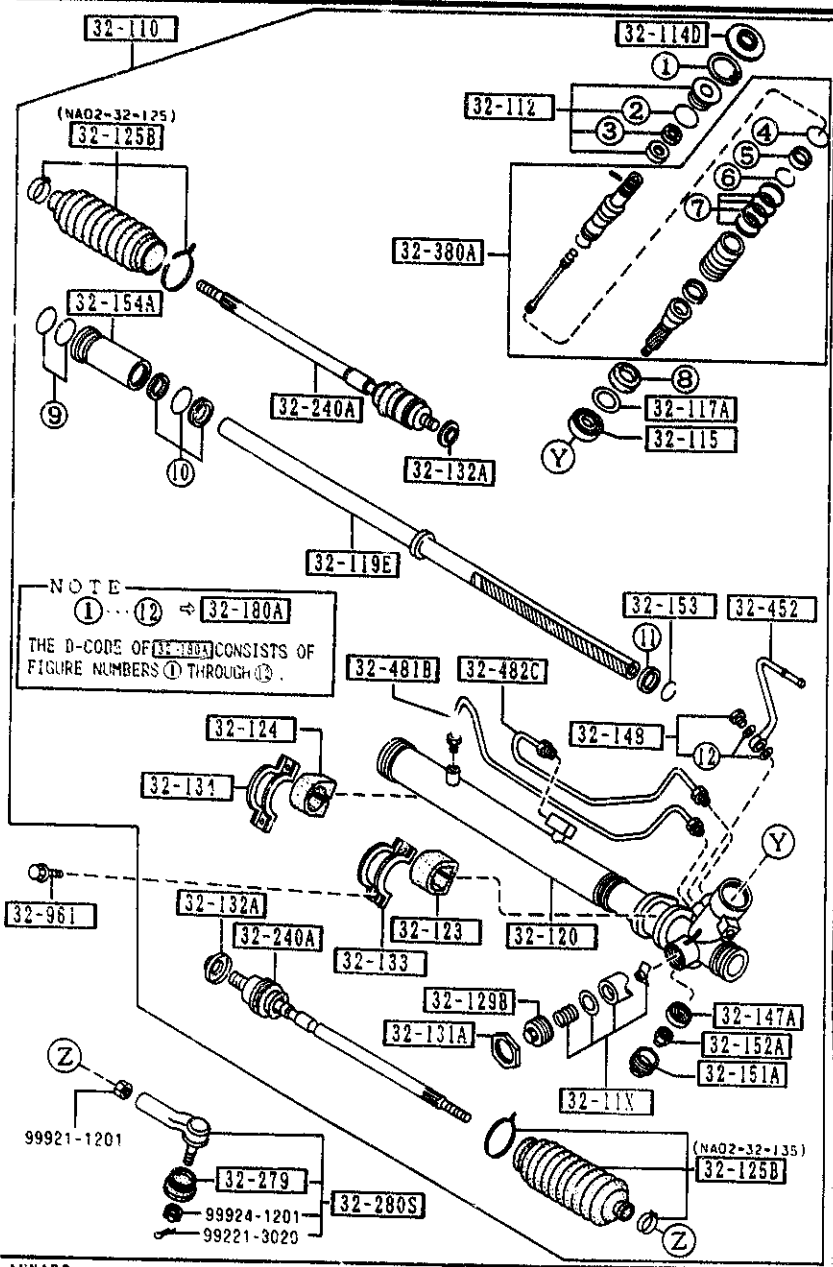
CAT. AUNA02-07

1993-12

1-E13

3220 A STEERING GEAR
(W/ POWER STEERING)

3220 A-3 * STEERING GEAR
(W/ POWER STEERING)



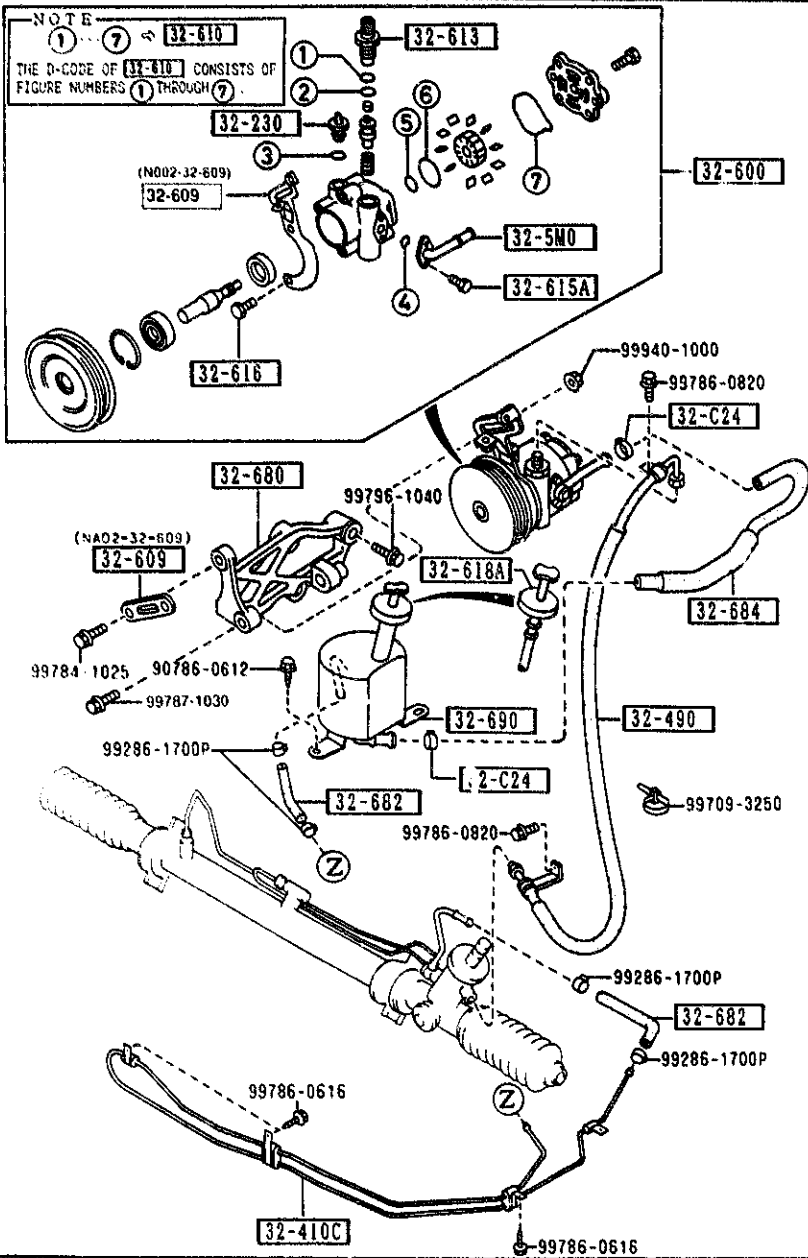
PART NO.	QTY	MODEL/RESTRICTION	MODEL/RESTRICTION	MODEL/RESTRICTION	FROM TO
32-452		PIPE 'B', ST. GEAR			
NA02-32-452	1				
32-481B		PIPE 'A', CYLINDER			
NA02-32-481	1				
32-482C		PIPE 'B', CYLINDER			
NA02-32-482	1				
32-961		BOLT			
G030-32-961	4				

AUNA02

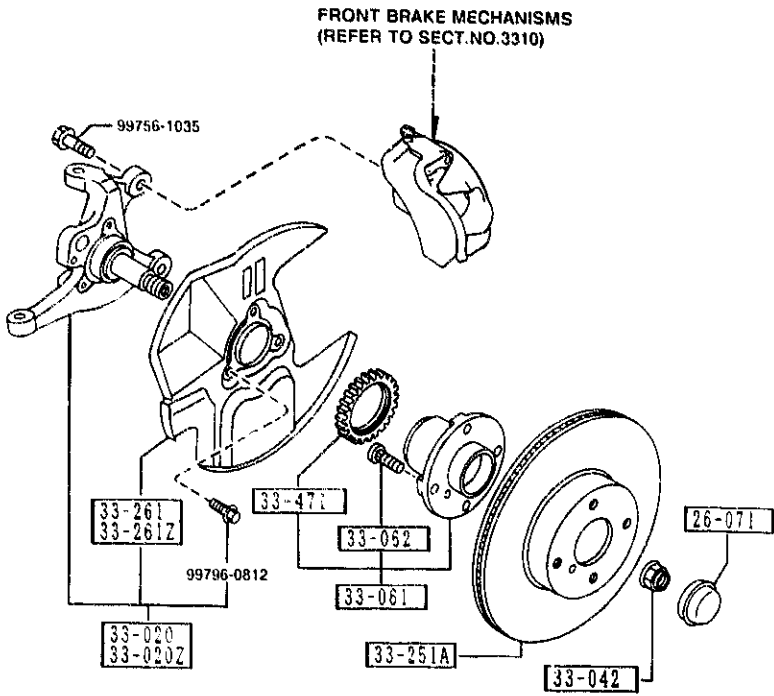
CAT. AUNA02-07

1993-12

3240 POWER STEERING SYSTEM

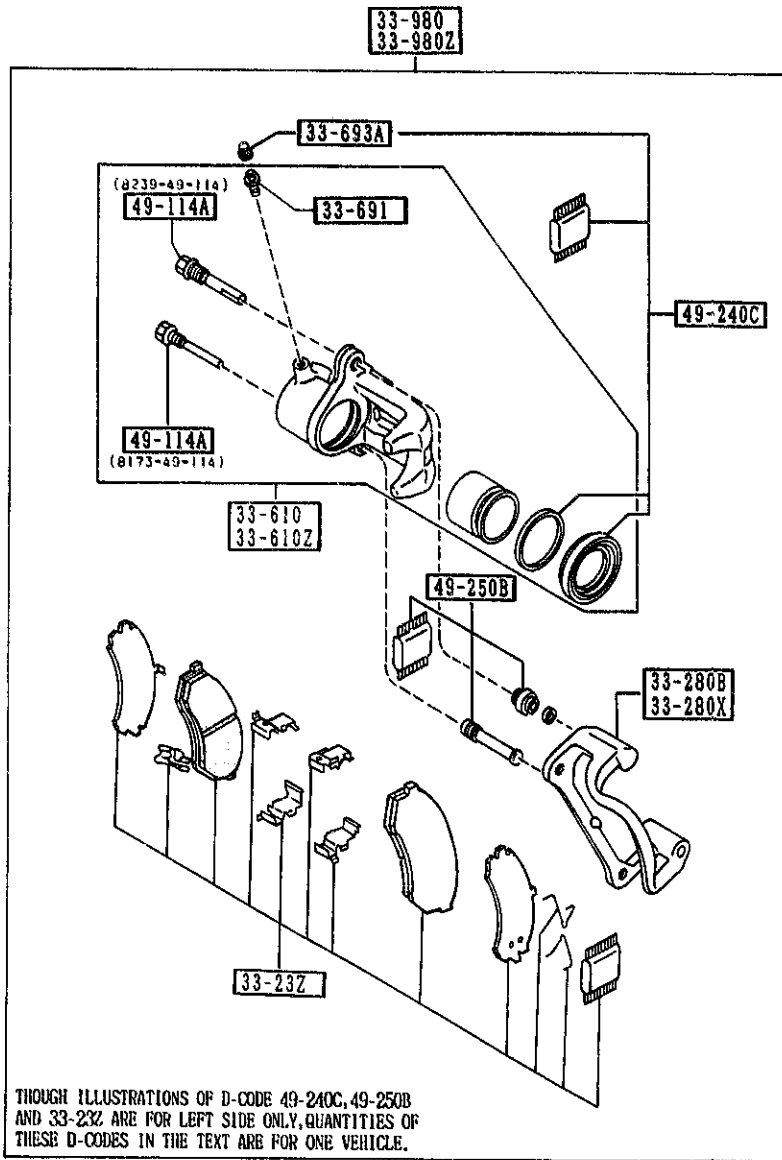


PART NO.	QTY	MODEL/RESTRICTION	MODEL/RESTRICTION	MODEL/RESTRICTION	FROM TO
32-680		BRACKET, VANE PUMP			
NA02-32-680	1				
32-682		HOSE, RETURN			
NA02-32-682	2				
32-684		HOSE, RETURN			
NA02-32-684B	1				
32-690		TANK, VANE PUMP			
NA02-32-690A	1				



PART NO.	QTY	MODEL/RESTRICTION	MODEL/RESTRICTION	MODEL/RESTRICTION	FROM-10
26-071		CAP, HUB			
B455-26-071	2				
33-020		KNUCKLE(R), STEERING			
NA01-33-020A	1	(W/O A. LOCK BRAKE)			
NA23-33-021A	1	(A. LOCK BRAKE)			
33-020Z		KNUCKLE(L), STEERING			
NA01-33-030A	1	(W/O A. LOCK BRAKE)			
NA23-33-031A	1	(A. LOCK BRAKE)			
33-042		NUT			
NA01-33-042A A (NA01-33-042B)	2	W/WASHER			-0820
NA01-33-042B	2	W/WASHER			0820-
33-061		HUB, WHEEL			
NA01-33-04X	2	(W/O A. LOCK BRAKE)			
NA23-33-04XA	2	(A. LOCK BRAKE)			
33-062		BOLT, HUB			
B455-33-062	8				
33-251A		PLATE, DISC			
NA01-33-25X	2				
33-261		COVER(R), DUST			
NA01-33-261	1	(W/O A. LOCK BRAKE)			
NA23-33-261	1	(A. LOCK BRAKE)			
33-261Z		COVER(L), DUST			
NA01-33-271	1	(W/O A. LOCK BRAKE)			
NA23-33-271	1	(A. LOCK BRAKE)			
33-471		ROTOR, SENSOR-FRT A. B. .S.			
NA23-33-471B	2				
0820 NA35**-206394					

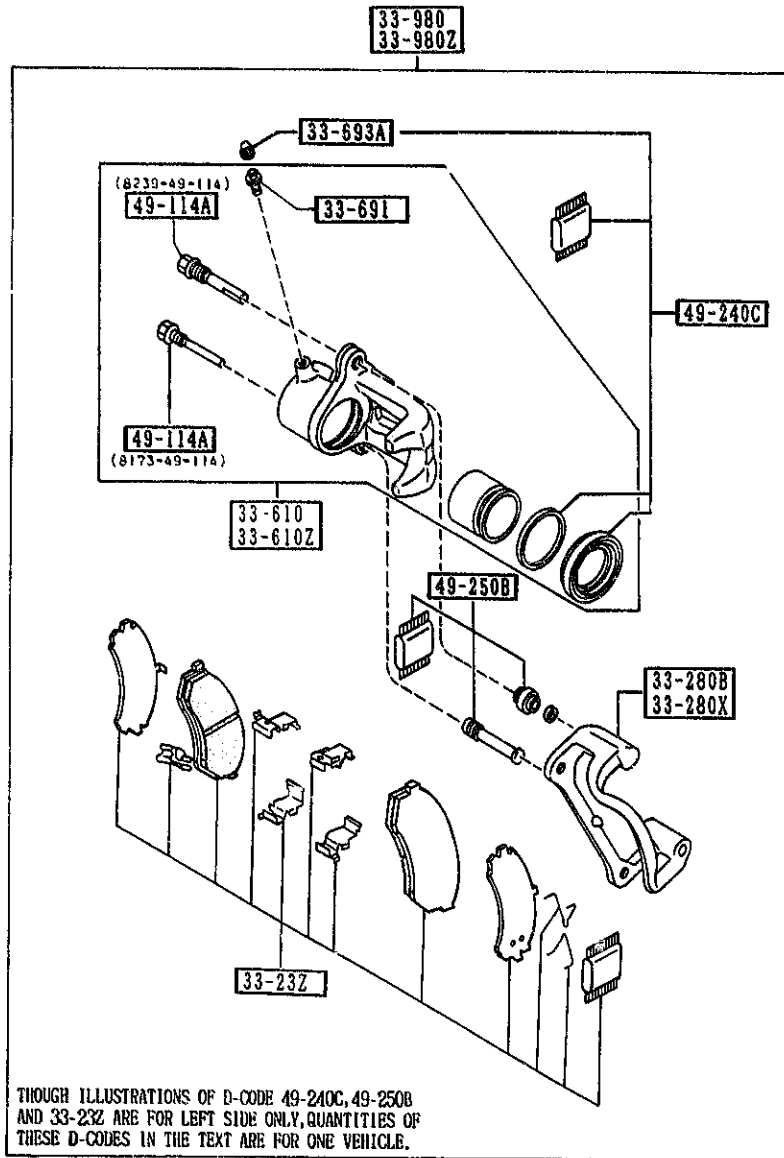
3310 FRONT BRAKE MECHANISMS



3310 -1 FRONT BRAKE MECHANISMS

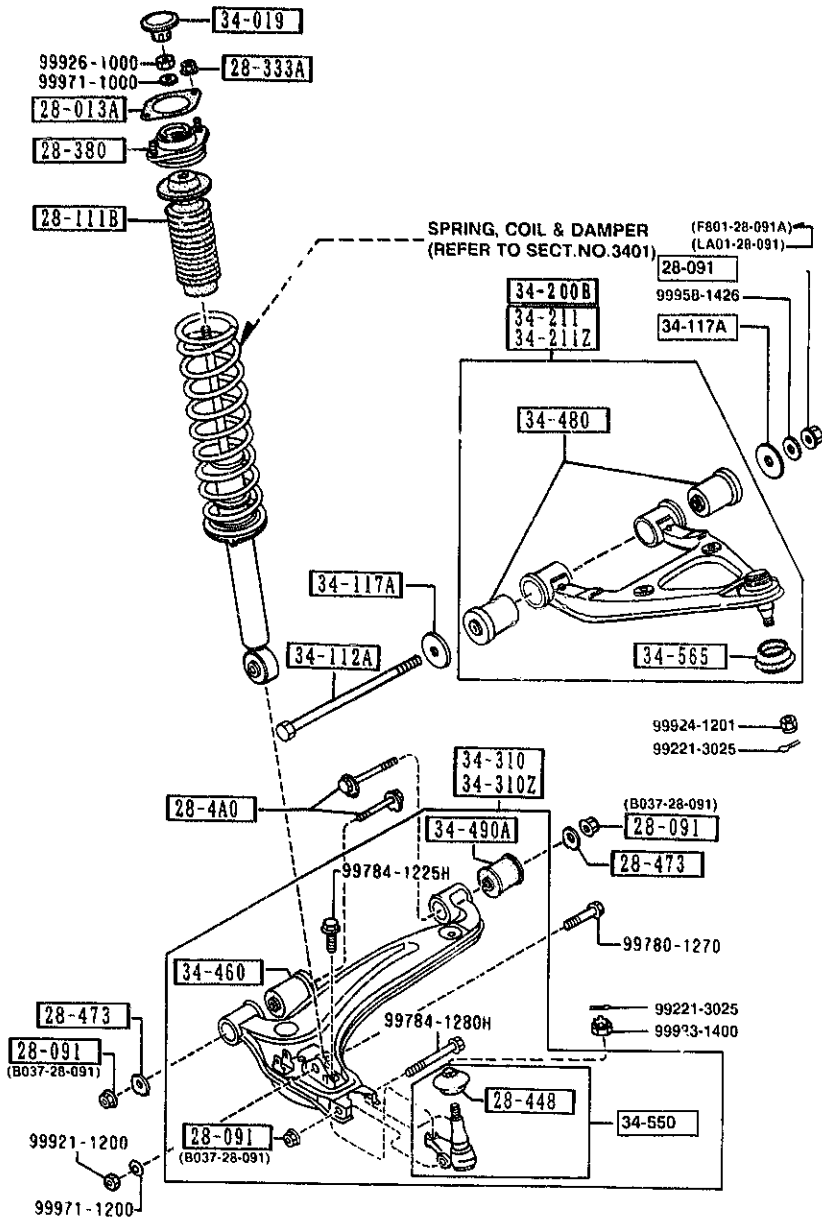
PART NO.	QTY	MODEL/RESTRICTION	MODEL/RESTRICTION	MODEL/RESTRICTION	FROM TO
33-232		PAD SET, FRT CALIPER			
NAY0-33-23ZA	1	NON ASBESTOS			-1801
NOY1-33-23Z	1				1801-
33-280B		SUPPORT(R), MOUNTING			
NA01-33-281	1				
33-280X		SUPPORT(L), MOUNTING			
NA01-33-291	1				
33-610		BODY & PISTON(R), CALIPER			
NA01-33-61X	1				
33-610Z		BODY & PISTON(L), CALIPER			
NA01-33-71X	1				
33-691		SCREW, BLEEDER			
B001-33-691	2				
33-693A		CAP, BLEEDER SCREW			
0259-33-693	2				
33-980		CALIPER(R), FRT BRAKE			
NA 7-33-980A	1				-0C25
A (NA10-33-980C)					
NA10-33-980C	1				0C25-1801
NO01-33-980	1				1801-
33-980Z		CALIPER(L), FRT BRAKE			
NA10-33-990A	1				-0C25
A (NA10-33-990C)					
NA10-33-990C	1				0C25-1801
NO01-33-990	1				1801-
49-114A		PIN, SLIDER			
8173-49-114	2				
8259-49-114	2				
49-240C		SEAL KIT, CALIPER-FRT			
NAY1-33-24Z	1				
0C25 NA35**223235					
1801 NA35**235561					

3310 FRONT BRAKE MECHANISMS



PART NO.	QTY	MODEL/RESTRICTION	MODEL/RESTRICTION	MODEL/RESTRICTION	FROM-TO
49-250B NAY1-33-25Z	1	BOOT KIT, FRT CALIPER			

3400 FRONT SUSPENSION MECHANISMS



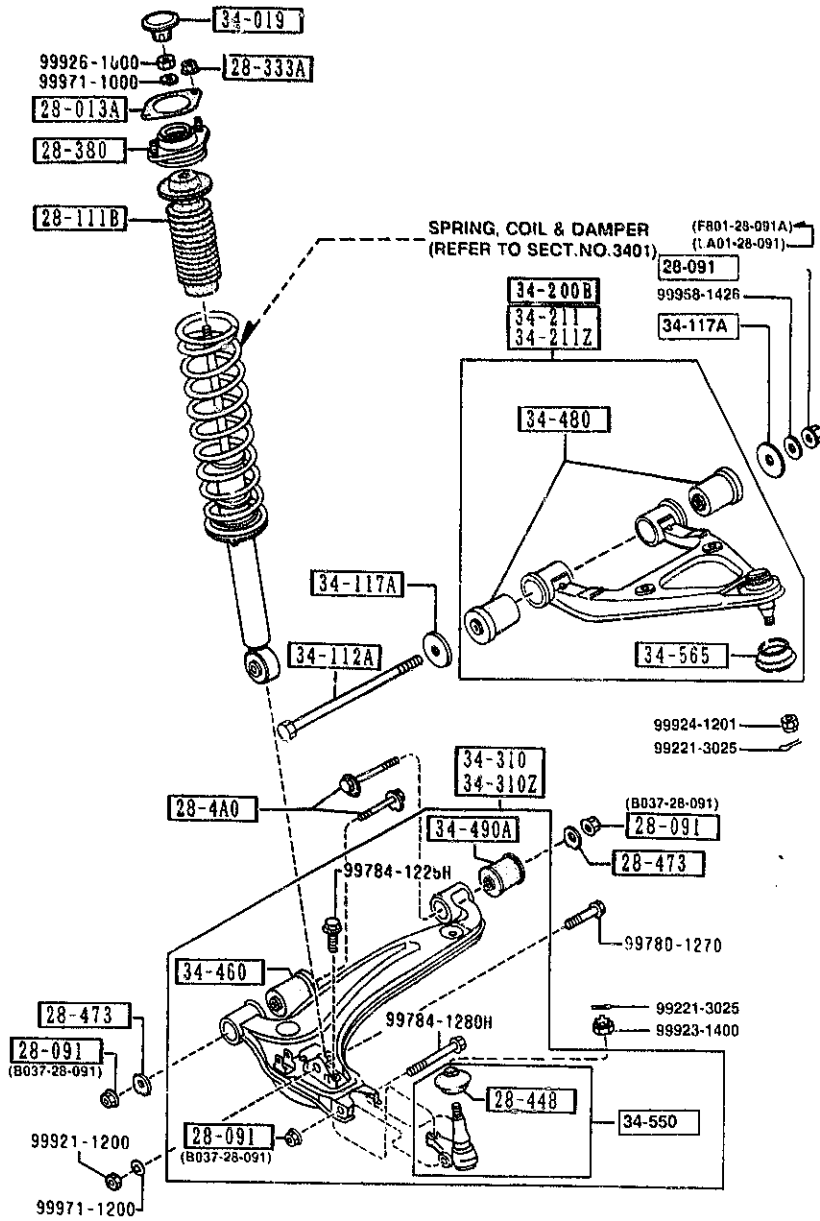
PART NO.	QTY	MODEL/RESTRICTION	MODEL/RESTRICTION	MODEL/RESTRICTION	FROM-TO
28-013A		SHEET, RUBBER			
G030-28-013A	2				
28-091		NUT			
B037-28-091	6				
LA01-28-091	2				-1510
FB01-28-091A	2				1510-
28-111B		STOPPER, BUMP			
NA01-28-111	2				
28-333A		NUT, FLANGE			
H001-28-333	4				
28-380		RUBBER, MOUNTING			
NA01-28-380A A (NA01-28-380B)	2				-2310
NA01-28-380B	2				2310-
28-4A0		BOLT, ADJUST			
NA01-28-4A0	4				
28-448		SEAL, DUST-BALL JOINT			
H266-28-448	2				
28-473		PLATE, CAM-SUB FRAME			
NA01-28-473	4				
34-019		CAP, DAMPER			
NA01-34-019	2				
34-112A		BOLT			
NA01-34-112	2				
34-117A		WASHER			
NA01-34-117A	4				
34-200B		ARM, UPPER-FRT			
NA01-34-200A	2 (W/O A. LOCK BRAKE)				
1510 NA35**234121					
2310 NA35**319561					

AUNA02

CAT. AUNA02-07

1993-12

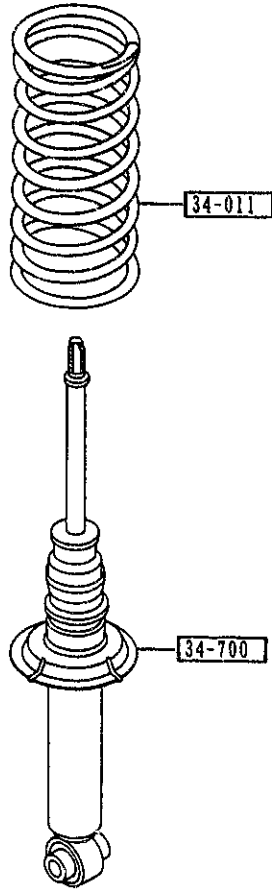
3400 FRONT SUSPENSION MECHANISMS



PART NO.	QTY	MODEL/RESTRICTION	MODEL/RESTRICTION	MODEL/RESTRICTION	FROM-10
34-211		ARM(R), UPPER			
NA23-34-200	1	(A. LOCK BRAKE)			
34-211Z		ARM(L), UPPER			
NA23-34-250	1	(A. LOCK BRAKE)			
34-310		ARM(R), LOWER			
NA01-34-300A	1				
34-310Z		ARM(L), LOWER			
NA01-34-350A	1				
34-460		BUSH, RUBBER-LWR ARM			
NA01-34-460A	2				
34-480		BUSHING, RUBBER-LOWER ARM			
NA01-34-480A	4				
34-490A		BUSHING, RUBBER			
NA01-34-490	2				
34-550		BALL JOINT, LOWER			
NA01-34-550	2				
34-565		SEAL, DUST			
NA01-34-548	2				

3401 -1 * FRONT SPRING & DAMPER

3401 FRONT SPRING & DAMPER

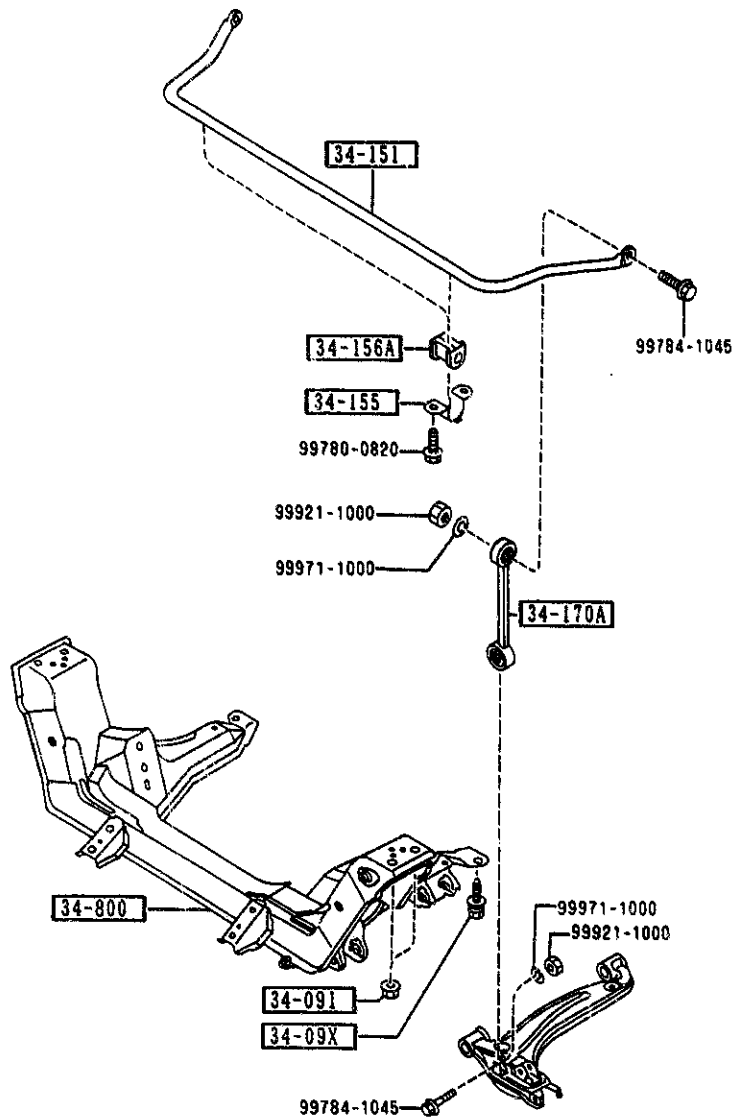


PART NO.	QTY	MODEL/RESTRICTION	MODEL/RESTRICTION	MODEL/RESTRICTION	FROM TO
34-011		SPRING, COIL-FR. NT			
NA01-34-011A	2	(MT)			
NA03-34-011	2	(AT)			
34-700		DAMPER, FRONT			
NA01-34-700	2	(W/O A. LOCK BRAKE)			
NA23-34-700B	2	(A. LOCK BRAKE)			

1-N13

3410 -1 * CROSSMEMBER & STABILIZER

3410 CROSSMEMBER & STABILIZER



PART NO.	QTY	MODEL/RESTRICTION	MODEL/RESTRICTION	MODEL/RESTRICTION	FROM TO
34-09X		BOLT			
NA01-34-09XA	4				
34-091		NUT			
FB01-34-091	4				
34-151		STABILIZER, FRONT			
NAC1-34-151A	1				
34-155		PLATE, STABILIZER			
FB01-34-155	2				
34-156A		RUBBER, STAB -FRT			
NA01-34-156A	2				
34-170A		LINK, CONTROL-STAB			
NA01-34-170	2				
34-800		MEMBER, CROSS			
NA01-34-800A	1				

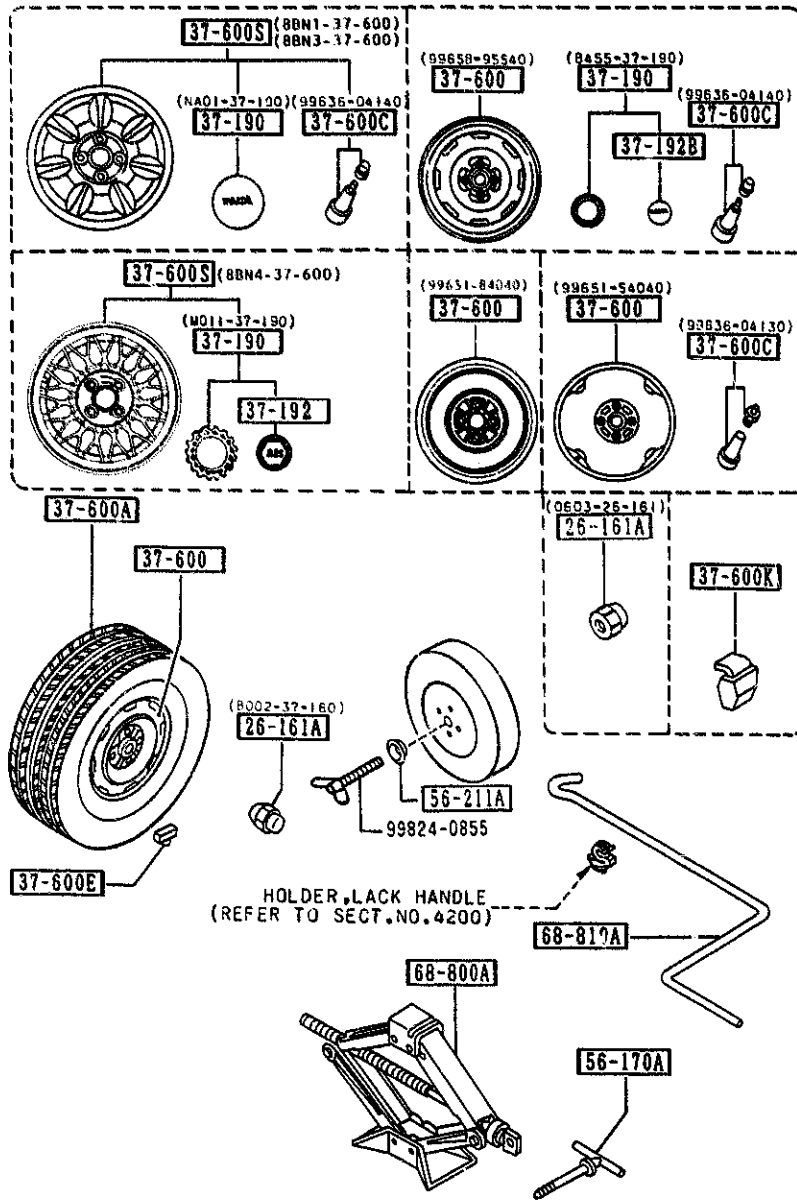
AUNA02

CAT. AUNA02-07

1993-12

1-C14

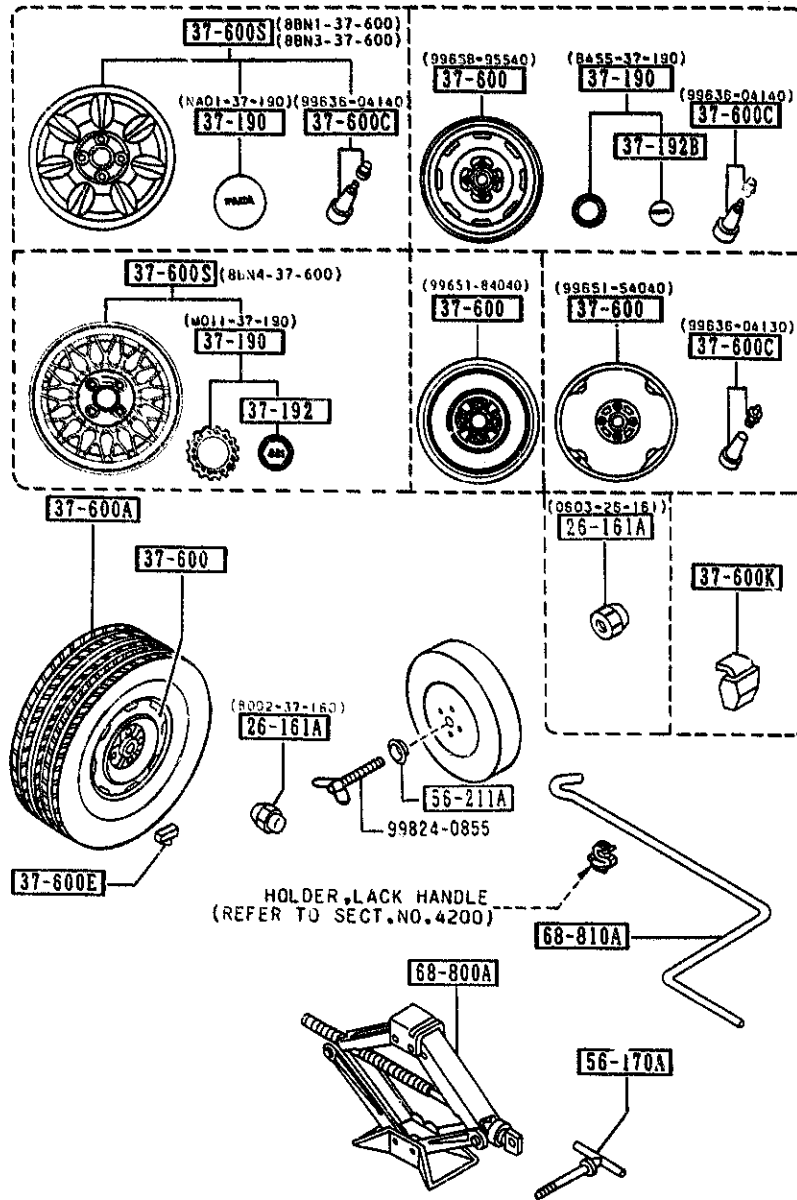
3700 TIRES & JACK



PART NO.	QTY	MODEL/RESTRICTION	MODEL/RESTRICTION	MODEL/RESTRICTION	FROM TO
26-161A		NUT, MUB			
0603-26-161	16	NON BRIGHT PKG-OPT,			
B002-37-160	16	PLATED BASE,			
37-190		CAP, CENTER			
B455-37-190	4	BASE,			
NA01-37-190	4	PKG-OPT,			
M011-37-190	4	SP-AD, (BBS ALUMI. WHEEL)			1801-
37-192		EMBLEM, CAP-WHEEL			
M011-37-192	4	SP-AD, (BBS ALUMI. WHEEL)			1801-
37-192B		EMBLEM, CENTER			
B001-37-192	4	BASE			
37-600		WHEEL, DISC-STEEL			
9965B-95540	4	5.5JX14 P=100/O=45 BASE,			
99651-54040	1	4TX14 P=100/O=45			-2501
99651-84040	1	4TX14 P=100/O=45			2501-
37-600A		TIRE			
90620-47614	1	T155/70D14			
90623-06684	4	P185/60R14 DUNLOP SP-AD, (BBS ALUMI. WHEEL)			
90624-26684	4	P185/60R14 BS			
37-600C		VALVE, AIR			
99636-04130	1	TR413			
99636-04140	4	TR414			
37-600E		WEIGHT, DISC WHEEL-ST EEL 5G			
99655-30005	4				

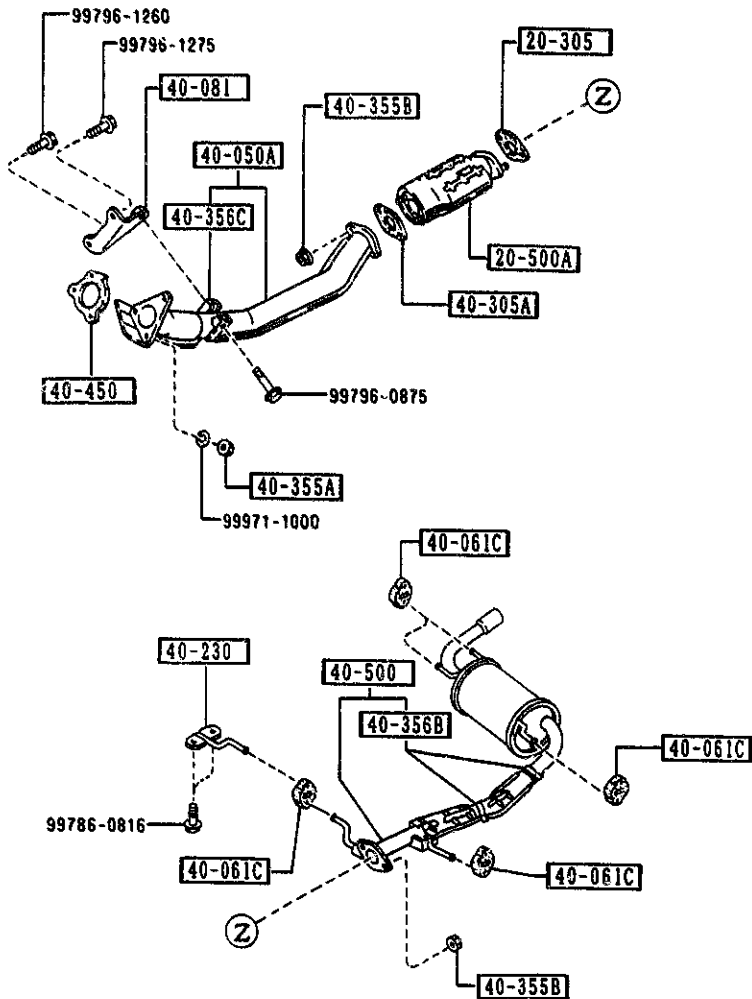
1801 NA35**X-235561
2501 NA35**X-326361

3700 TIRES & JACK



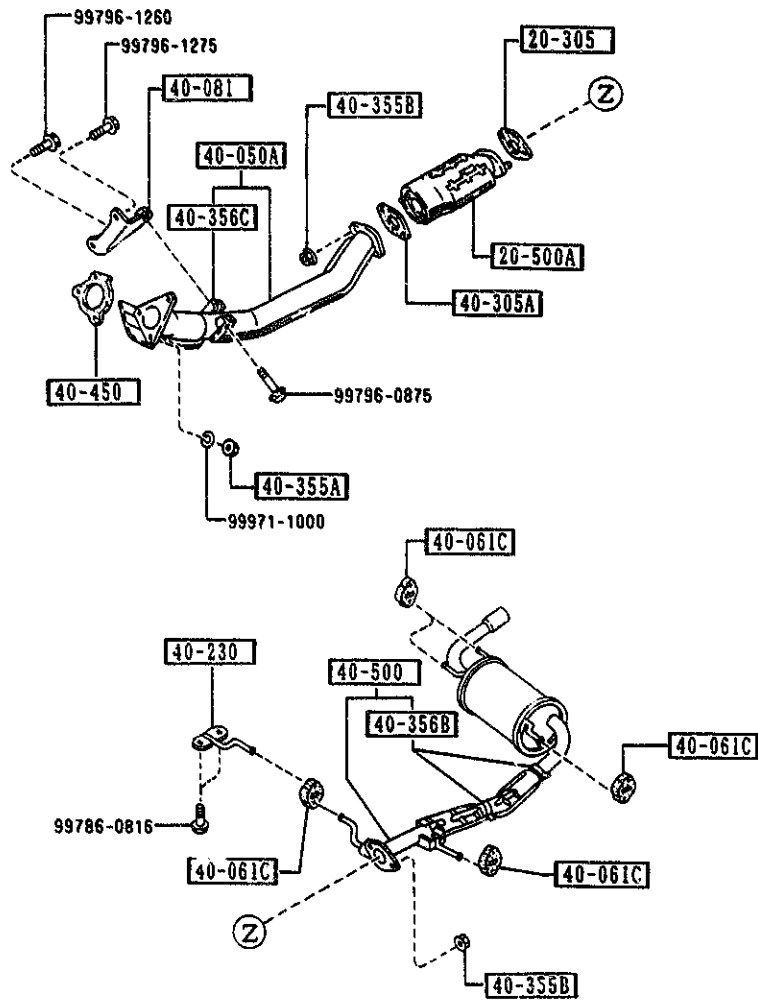
PART NO.	QTY	MODEL/RESTRICTION	MODEL/RESTRICTION	MODEL/RESTRICTION	FROM-TO
CONT'D 99655-90060					
	4	600 FOR 1-PIECE WHL			
		----- 37-600S -----			
8BN1-37-600	4	5.5JXX14 NKK MAKE PKG-OPT,			
8BN3-37-600	4	5.5JXX14 ENKEI MAKE PKG-OPT,			
8BN4-37-600	4	6JXX14 BBS SP-AD, (BBS ALUMI.WHEEL)			1801-
		----- 56-170A -----			
B001-56-170C	1	BOLT, JACK SET			
		----- 56-211A -----			
1219-56-211	1	PLATE, CLAMP-JACK			
		----- 68-800A -----			
B455-37-790A	1	JACK			
		----- 68-810A -----			
GJ21-37-810	1	HANDLE, JACK			
1801 NA35**~235561					

4000 EXHAUST SYSTEM



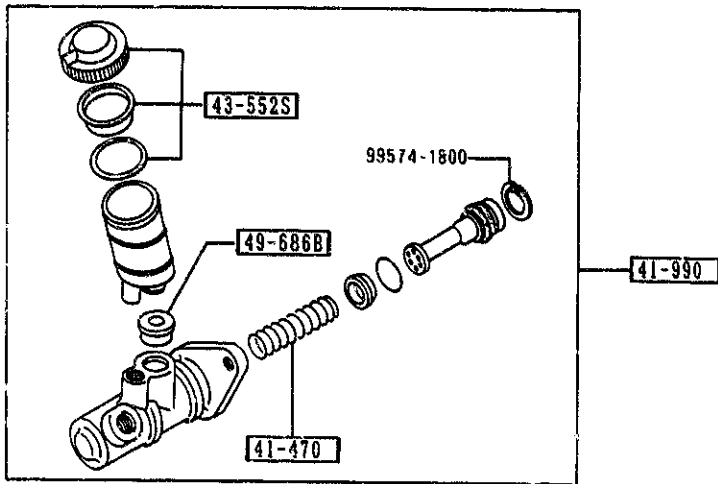
PART NO.	QTY	MODEL/RESTRICTION	MODEL/RESTRICTION	MODEL/RESTRICTION	FROM 10
20-305 B690-40-305	1	GASKET, EXH. PIPE-CONVERTER NON ASBESTOS			
20-500A B61P-20-600	1	CATALYST, THREE WAY			
40-050A B690-40-500A	1	PIPE, EXHAUST-FRONT			
40-061C RF03-40-061	5	HANGER, SILENCER			
40-081 B690-40-080A	1	BRACKET, HANGER			
40-230 B690-40-690	1	BRACKET, HANGER			
40-305A B322-40-305	1	GASKET NON ASBESTOS			
40-355A 2158-40-355	3	NUT			
40-355B JE10-40-355	4	NUT			
40-356B B6A5-40-356	2	BAND			
40-356C B690-40-356	1	BAND			
40-450 B690-40-450	1	GASKET, CONVERTER NON ASBESTOS			
40-500 B6B4-40-100B AN(B6B4-40-100C)	1	SILENCER, MAIN			-1601
1601 NA35**~235561					

4000 EXHAUST SYSTEM

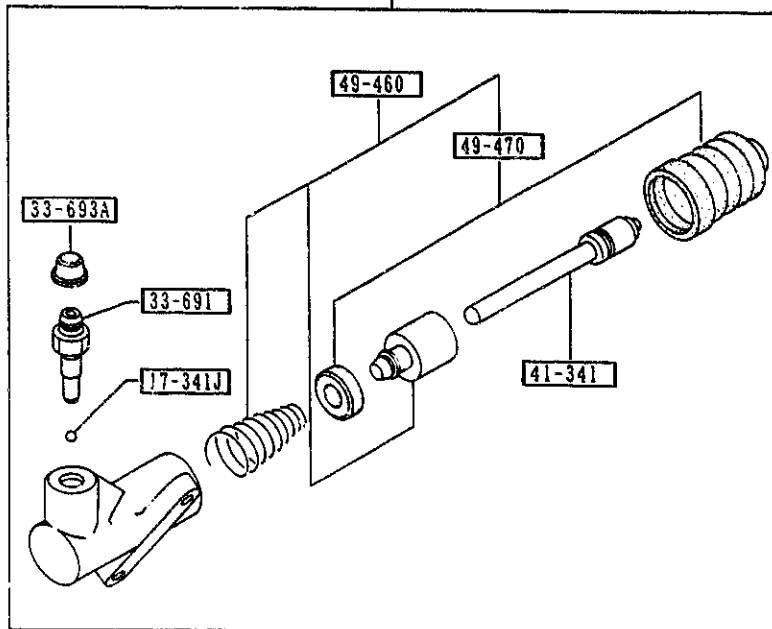


PART NO.	QTY	MODEL/RESTRICTION	MODEL/RESTRICTION	MODEL/RESTRICTION	FROM TO
CONT'D					
B690-40-100F AN(B690-40-100G)	1				-1601
B6B4-40-100C A (B6B4-40-100D)	1				1601-1826
B690-40-100G A (B690-40-100H)	1				1601-1626
B690-40-100H AN(B690-40-100J)	1				1826-2407
B6B4-40-100D AN(B6B4-40-100E)	1				1826-2408
B690-40-100J	1 (MT)				2407-
B6B4-40-100E	1 (AT)				2408-
1601 NA35**-235561 1826 NA35**-309171 2407 NA35**-322783 2408 NA35**-323024					

4140 CLUTCH RELEASE & MASTER CYLINDERS (MANUAL TRANSMISSION)



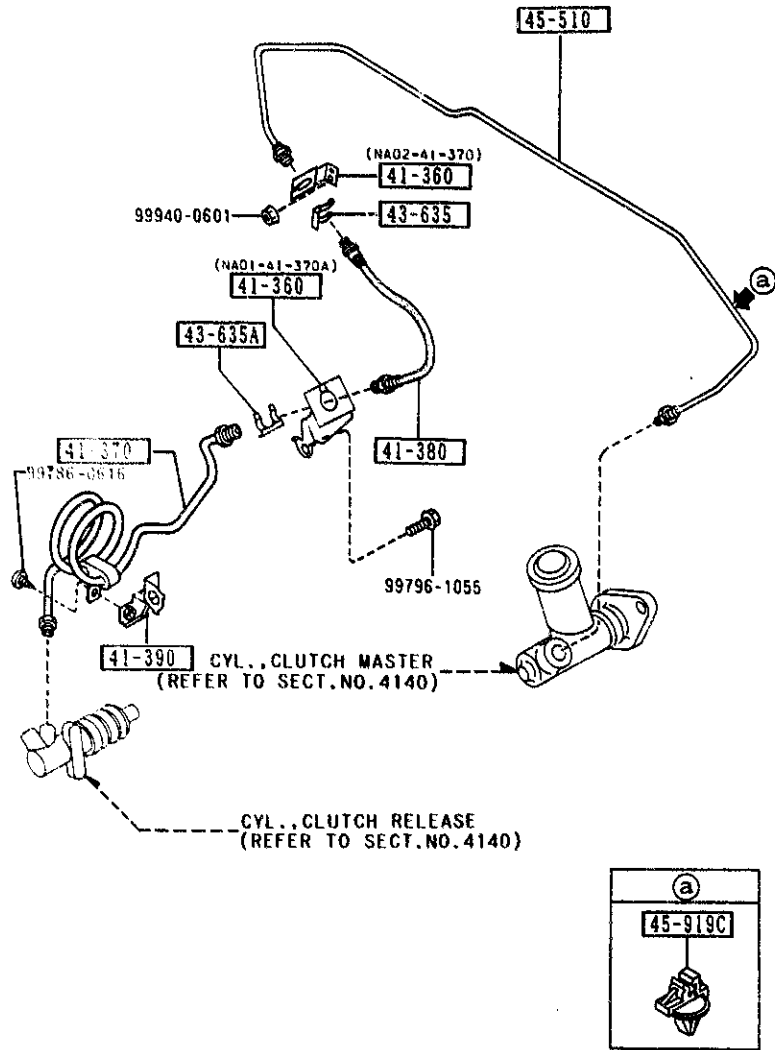
41-920



PART NO.	QTY	MODEL/RESTRICTION	MODEL/RESTRICTION	MODEL/RESTRICTION	FROM TO
17-341J		BALL, STEEL			
99611-1500	1				
33-691		SCREW, BLEEDER			
0259-33-691	1				
33-693A		CAP, BLEEDER SCREW			
0259-33-693	1				
41-341		ROD, PUSH			
H266-41-341	1				
41-470		SPRING			
B312-41-470	1				
41-920		CYL., CLUTCH RELEASE			
NA01-41-920	1				
41-990		CYL., CLUTCH MASTER			
NA01-41-400A	1				
43-552S		CAP SET, RESERVE TANK			
B093-49-580	1				
49-460		PARTS KIT, INNER			
H005-49-460	1				
49-470		SEAL KIT			
H005-49-470	1				
49-686B		BUSH, ELBOW JOINT			
0305-49-686B	1				

4145 -1 * CLUTCH PIPINGS (MANUAL TRANSMISSION)

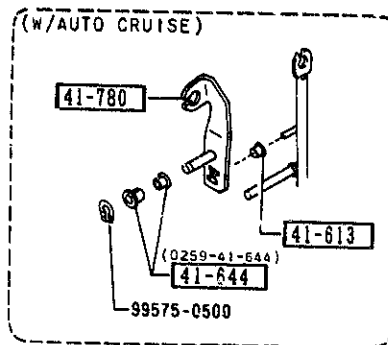
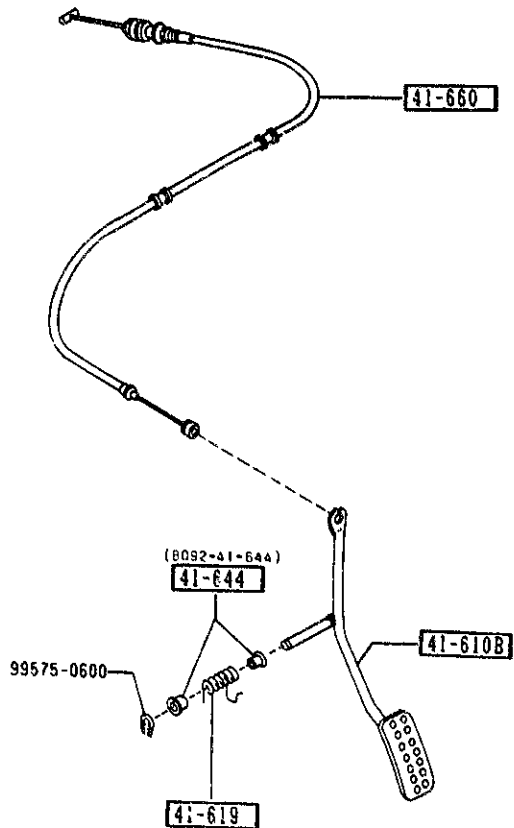
4145 CLUTCH PIPINGS (MANUAL TRANSMISSION)



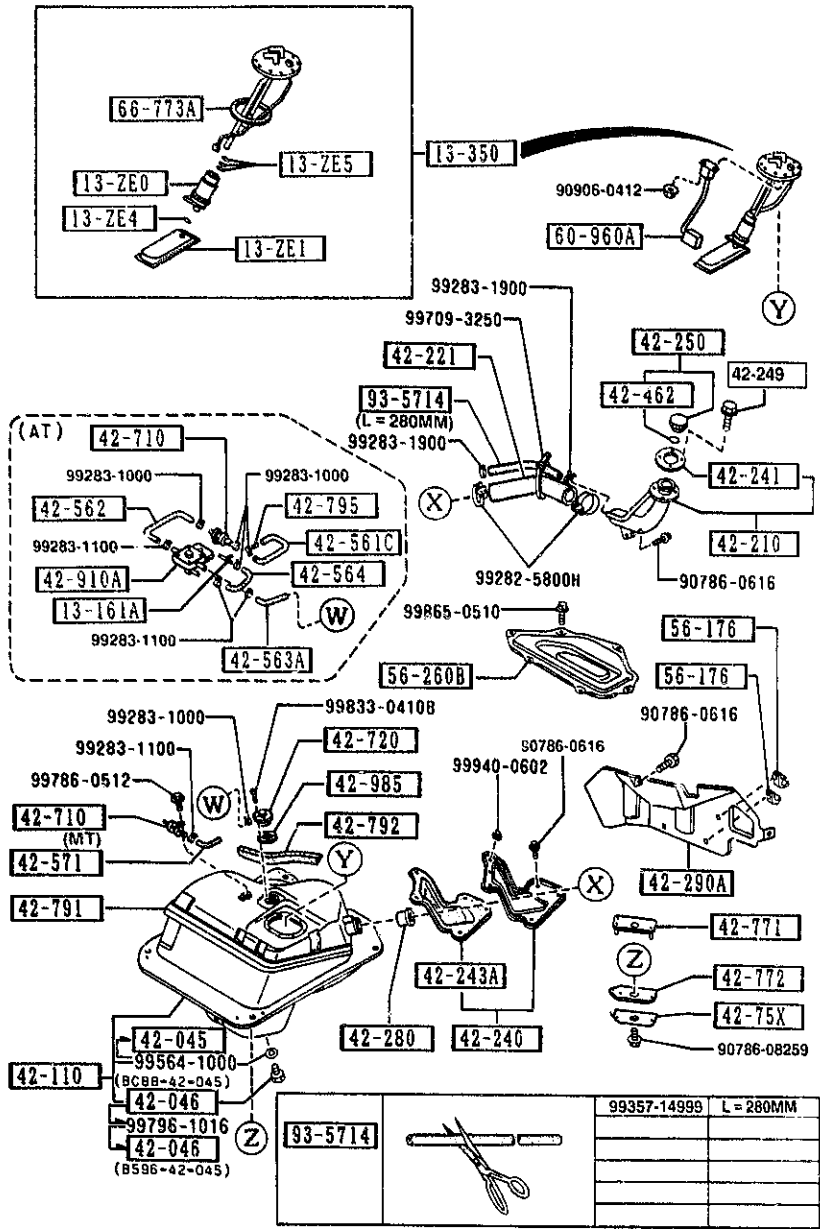
PART NO.	QTY	MODEL/RESTRICTION	MODEL/RESTRICTION	MODEL/RESTRICTION	FROM 10
41-360		HOLDER, CLUTCH			
NA01-41-370A	1	SUMIND KOGYO			
NA02-41-370	1	MIDORI			
41-370		PIPE, CLUTCH			
NA01-41-360A	1				
41-380		HOSE, FLEXIBLE			
GK67-41-380A	1				
41-390		HOLDER, PIPE			
NA01-41-390	1				
43-635		CLIP, FLEXIBLE HOSE			
W023-43-635	1				0723-
43-635A		CLIP, FLEXIBLE HOSE			
0136-43-635	2				-0723
0136-43-635	1				0723-
45-510		PIPE, CLUTCH			
NA20-45-510D	1				
45-919C		CLIP, PIPE			
G030-45-919	1				
0723 NA35**-203719					

4160 -1 * ACCELERATOR CONTROL SYSTEM

4160 ACCELERATOR CONTROL SYSTEM

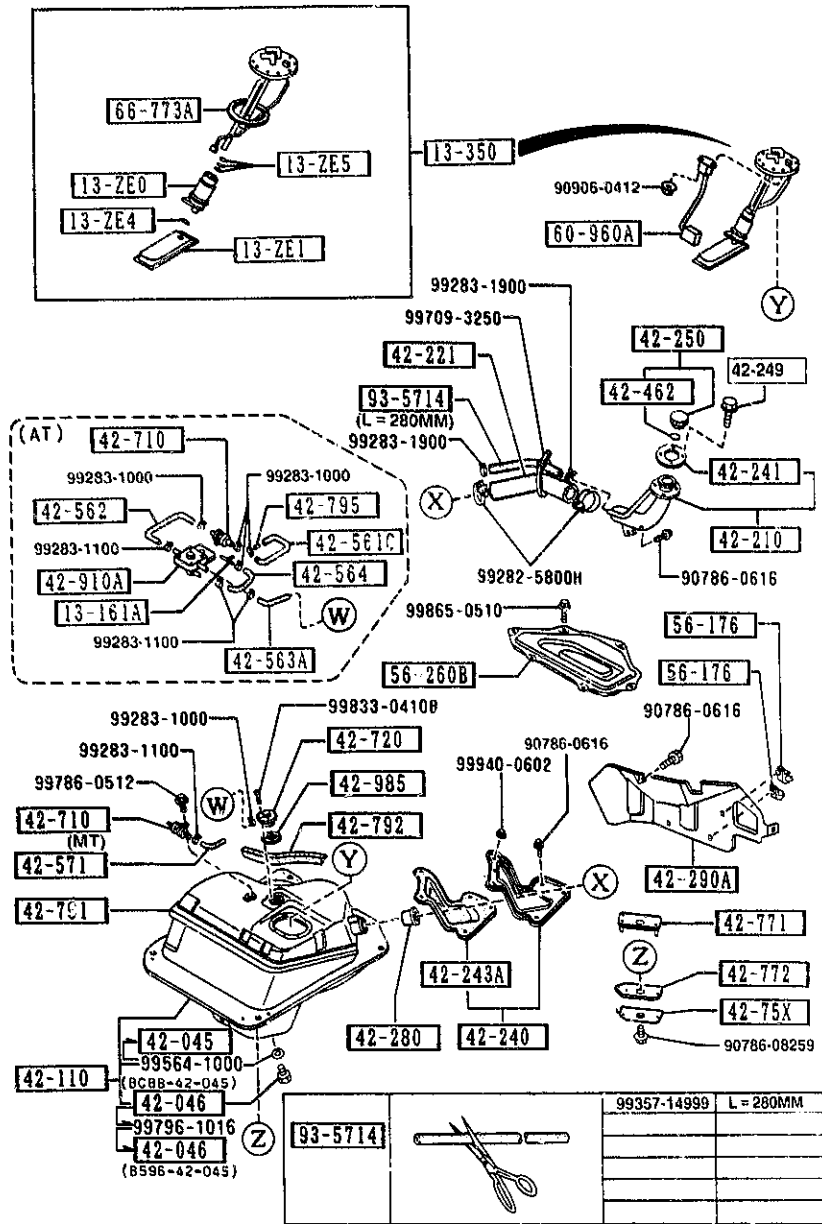


PART NO.	QTY	MODEL/RESTRICTION	MODEL/RESTRICTION	MODEL/RESTRICTION	FROM TO
41-610B		PEDAL & ARM			
NA01-41-610A	1	BASE, (W/O AUTO CRUISE CON T.)			
NA02-41-610A	1	PKG-OPT, (W/AUTO CRUISE CONT)			
41-613		ROLLER			
B104-41-114	1	PKG-OPT, (W/AUTO CRUISE CONT)			
41-619		SPRING, RETURN			
NA01-41-619	1				
41-644		BUSH			
B092-41-644	2	OIRES KOGYO			
0259-41-644	2	ONDO KOSAKUSHO PKG-OPT, (W/AUTO CRUISE CONT)			
41-660		CABLE, ACCEL.			
NA01-41-660A	1				
41-780		LEVER, ACCELERATOR			
NA01-41-130A	1	PKG-OPT, (W/AUTO CRUISE CONT)			

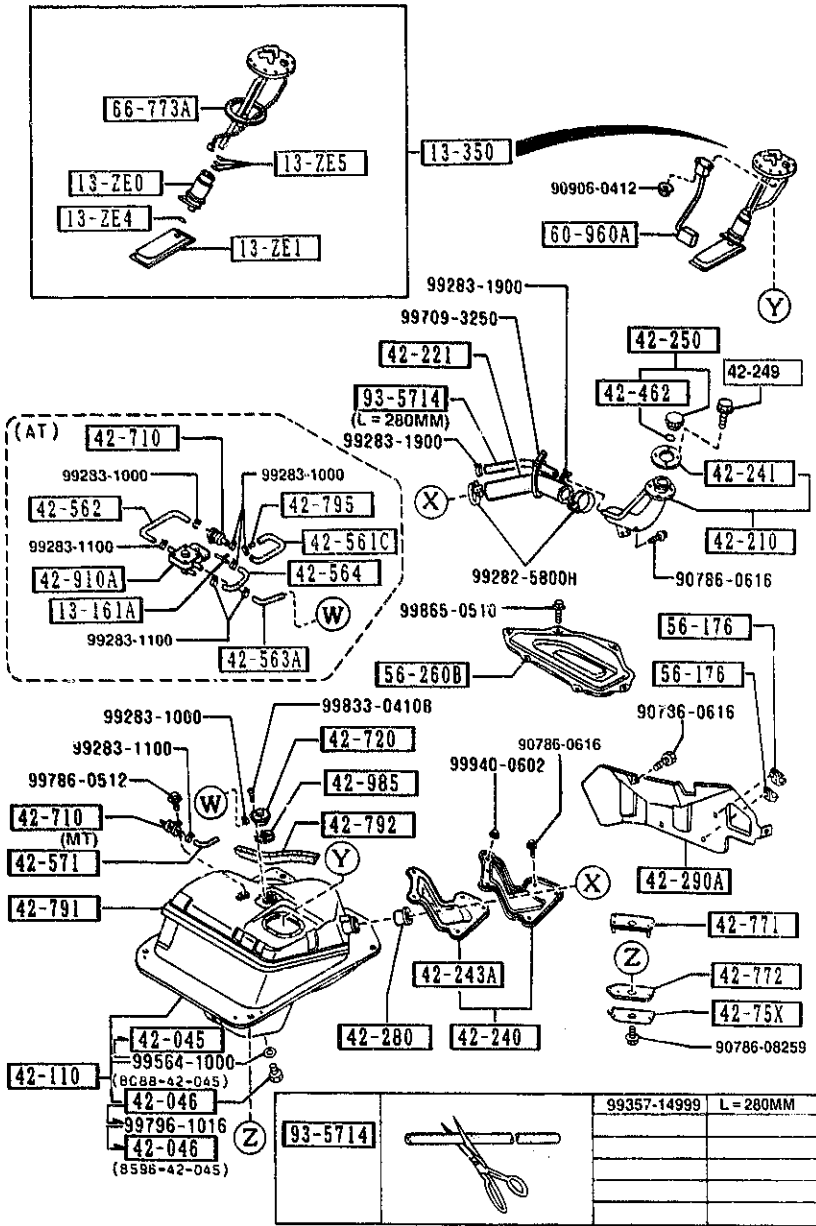


PART NO.	QTY	MODEL/RESTRICTION	MODEL/RESTRICTION	MODEL/RESTRICTION	FROM-TO
13-ZE0		PUMP,FUEL			
B61P-13-ZE0	1				
13-ZE1		FILTER,FUEL PUMP			
B61P-13-ZE1	1				
13-ZE4		WASHER,LOCK-PUMP FIL TER DENSO			
FEH2-13-ZE4	1				
13-ZE5		RING,'O'-FUEL PUMP			
B61P-13-ZE5	1				
13-161A		JOINT,'T'			
E580-13-161	1 (AT)				
13-350		PUMP,FUEL			
B61P-13-350B	1				
42-045		GASKET,DRAIN PLUG			
0866-42-046	1				1801-
42-046		PLUG,DRAIN			
BC88-42-045	1				-1801
B596-42-045	1				2201-
42-110		TANK,FUEL			
NA01-42-110A	1 (MT)				
NA03-42-110	1 (AT)				
42-210		PIPE,FILLER			
NA01-42-210A	1				
42-221		HOSE,FILLER			
NA01-42-241B	1				
42-240		COVER,DUST			
NA01-42-230	1				
42-241		GASKET,FILLER PIPE			
0866-42-366B	1				
1801 NA35**X-306993					
2201 NA35**X-316887					

4200 FUEL TANK



PART NO.	QTY	MODEL/RESTRICTION	MODEL/RESTRICTION	MODEL/RESTRICTION	FROM TO
42-243A		GASKET 'A', DUST COVER			
NA01-42-233	1				
42-249		BOLT, FILLER PIPE			
NA01-42-249B	4				
42-250		CAP, FILLER			
NA02-42-250	1				
42-280		VALVE, NON RETURN			
H260-42-270	1				
42-290A		PROTECTOR 'A', FILLER PIPE			
NA01-42-291A	1				
42-462		GASKET, CAP			
*BF67-42-252	1				
42-561C		HOSE NO. 1, BREATHER			
NA03-42-561	1 (AT)				
42-562		HOSE NO. 2, BREATHER			
NA03-42-562	1 (AT)				
42-563A		HOSE NO. 3, BREATHER			
NA03-42-563	1 (AT)				
42-564		HOSE NO. 4, BREATHER			
NA03-42-564	1 (AT)				
42-571		HOSE, VENT			
NA01-42-561	1 (MT)				
42-710		VALVE, CHECK			
H260-42-910B	1				
42-720		VALVE, FUEL VAPOR.			
FB01-42-980	1				
42-75X		REINF., FUEL TANK			
NA01-42-77X	4				

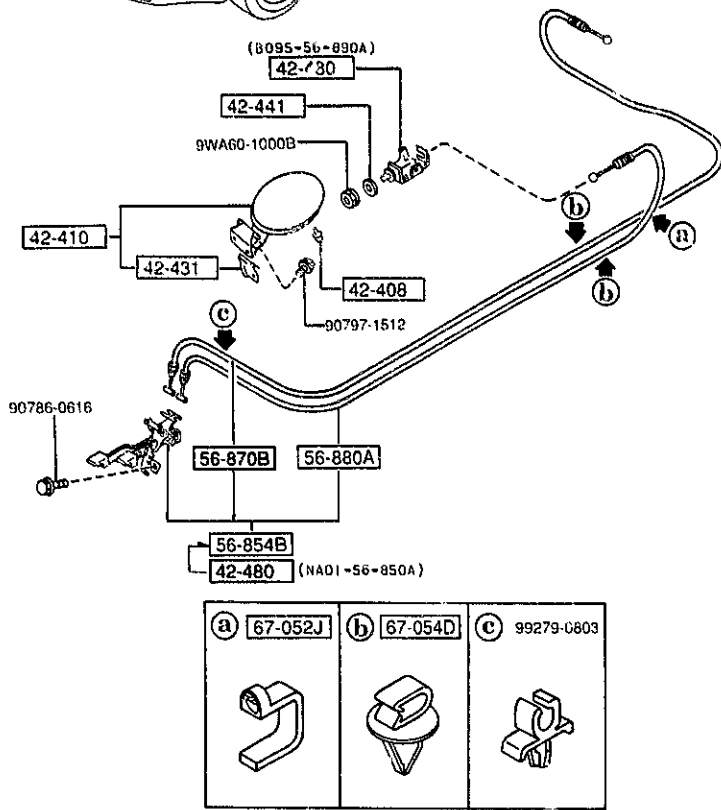
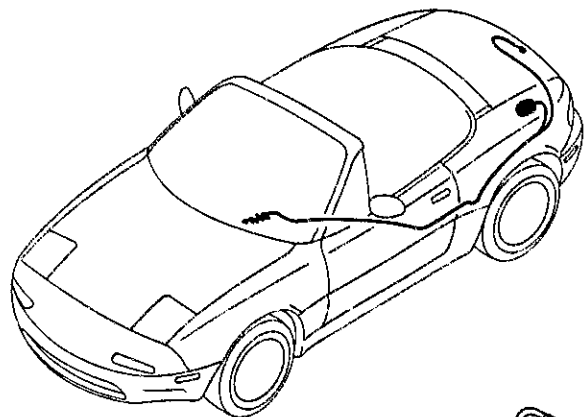


PART NO.	QTY	MODEL/RESTRICTION	MODEL/RESTRICTION	MODEL/RESTRICTION	FROM TO
42-771		RUBBER(UP), MOUNT-TANK			
NA01-42-771	4				
42-772		RUBBER(LWR), MOUNT-TANK			
NA01-42-772	4				
42-791		PAD, FUEL TANK			
NA01-42-761	1				
42-792		PAD, FUEL TANK			
NA01-42-762	1				
42-795		INSERT			
GN51-42-795	1 (AT)				
42-910A		VALVE 'A', CHECK-BREATHHER (AT)			
NA03-42-910	1				
42-985		GASKET, VAPOR VALVE			
FB01-42-985	1				
56-176		HOLDER, JACK HANDLE			
G030-56-176	3				
56-260B		COVER, GAUGE-FUEL TANK			
NA01-56-260	1				
60-960A		GAUGE, FUEL TANK			
NA01-60-960	1				
66-773A		GASKET			
NA01-60-962	1				
93-5714		HOSE			
99357-14999	1				

1-K15

4210 FUEL LID OPENER

4210 -1 * FUEL LID OPENER



PART NO.	QTY	MODEL/RESTRICTION	MODEL/RESTRICTION	MODEL/RESTRICTION	FROM TO
42-408		STOPPER, FILLER LID			
0187-70-491	2				
42-410		LID, FUEL FILLER			
NA01-42-410A	1				
42-431		SPRING LIFT, LID			
H043-42-431D	1				
42-441		WASHER, LID OPENER			
NA01-56-896	1				
42-480		OPENER, FILLER LID			
B095-56-890A	1				
NA01-56-850A	1				-1801
56-854B		OPENER, T/LID & F/LID			
N007-56-850A	1				1801-
56-870B		CABLE, T/LID OPENER			
N007-56-880A	1				1801-
56-880A		CABLE, F/LID OPENER			
NA01-56-890A	1				
67-052J		CLIP			
B001-67-051	1				
67-054D		CLIP			
H260-67-054	2				
1801 NA35**~235561					

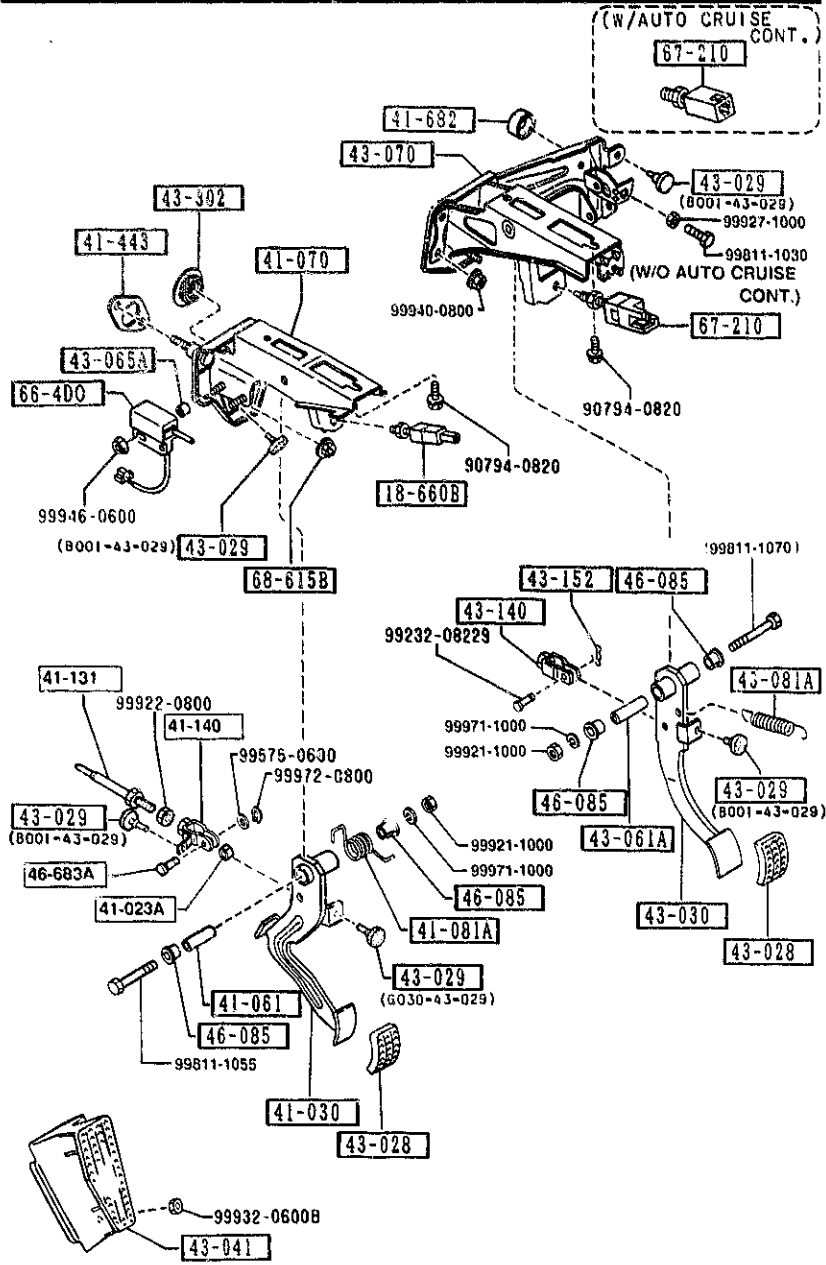
AUNA02

CAT. AUNA02-07

1993-12

4300 -1 CLUTCH & BRAKE PEDALS (MANUAL TRANSMISSION)

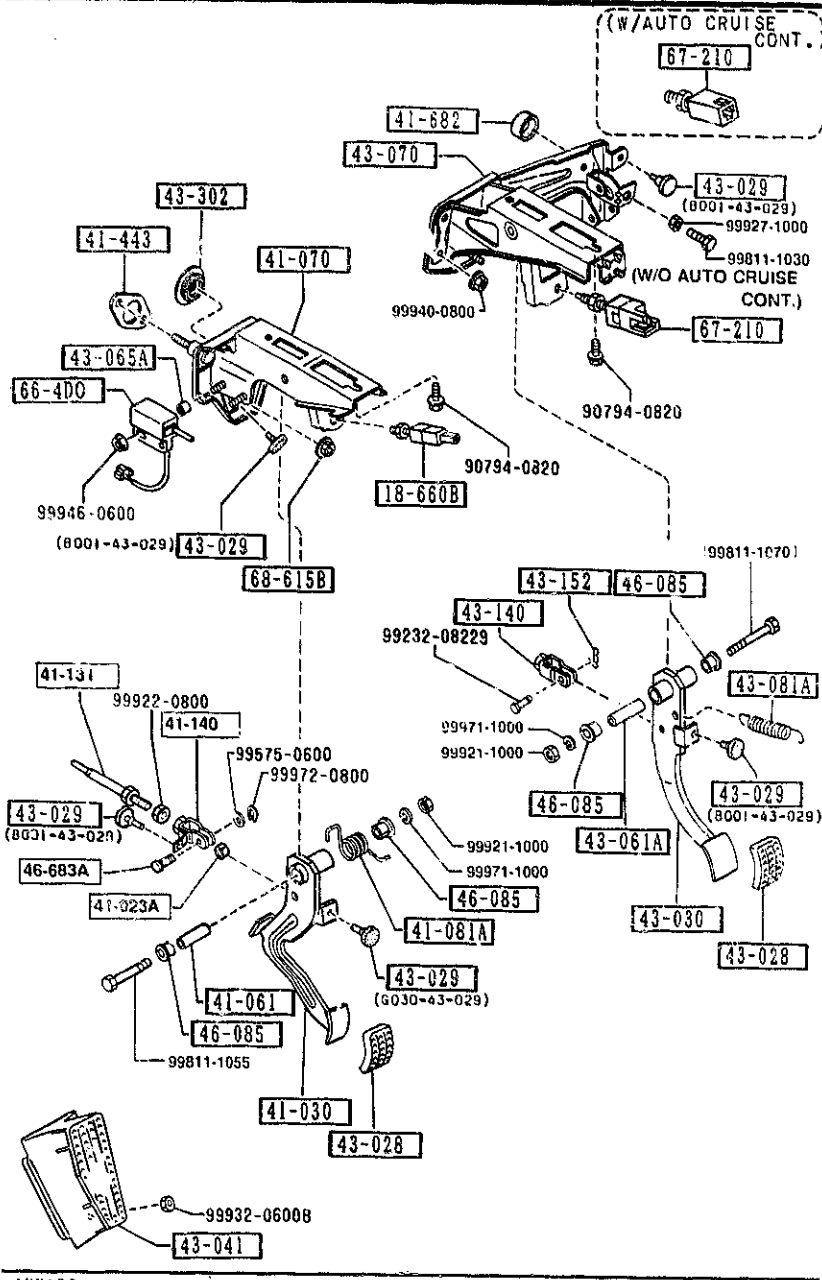
4300 CLUTCH & BRAKE PEDALS (MANUAL TRANSMISSION)



PART NO.	QTY	MODEL/RESIRICTION	MODEL/RESTRICTION	MODEL/RESTRICTION	FROM-TO
18-660B		SWITCH,CLUTCH			
LA01-66-490A	1				
41-023A		BUSH			
0727-41-023	1				
41-030		PEDAL,CLUTCH			
NA01-41-030B	1				-1101
A (NA01-41-030C)					1101-
NA01-41-030C	1				
41-061		SPACER			
0727-41-061	1				
41-070		BRACKET,MASTER CYL.			
NA01-41-070A	1				
41-081A		SPRING,RETURN			
BR70-41-081	1				
41-131		ROD,PUSH			
0824-41-131	1				
41-140		FORK,CLUTCH			
NA01-41-140B	1				
41-443		GASKET			
NA01-41-443	1				
41-682		RUBBER,STOP			
1456-41-682	1	PKG-OPT, (W/AUTO CRUISE CONT)			
43-028		PAD,PEDAL			
B092-43-028	2				
43-029		RUBBER,STOPPER			
B001-43-029	4	KUROISHI TEKKO			
G030-43-029	1	OIRES KOGYO			
1101 NA35**N-223636					

4300 CLUTCH & BRAKE PEDALS (MANUAL TRANSMISSION)

4300 -2 CLUTCH & BRAKE PEDALS (MANUAL TRANSMISSION)



PART NO.	QTY	MODEL/RESTRICTION	MODEL/RESTRICTION	MODEL/RESTRICTION	FROM 10
43-030		PEDAL, BRAKE			
NA01-43-030	1				
43-041		REST, FOOT			
NA01-43-041	1				
43-061A		PIPE, PEDAL			
0866-43-062	1				
43-065A		SPACER			
BR70-43-065	2				
43-070		BRACKET, MASTER CYL.			
NA01-43-070A	1	BASE, (W/O AUTO CRUISE CONT.)			
NA02-43-070A	1	PKG-OPT, (W/AUTO CRUISE CONT.)			
43-081A		SPRING, RETURN-BRAKE			
B092-43-081	1				
43-140		FORK, BRAKE			
1524-43-140	1				
*1524-43-141	1				
43-152		PIN, SNAP			
D001-43-152	1				
43-302		GROMMET, BRAKE PEDAL			
B180-43-302	1				
46-055		BUSH			
1015-46-085	4				
46-683A		PIN			
0223-46-683	1				
66-4D0		SWITCH, CLUTCH CUT			
FB01-66-4D0	1				
2620 NA35**-330122					

-2620
2620-

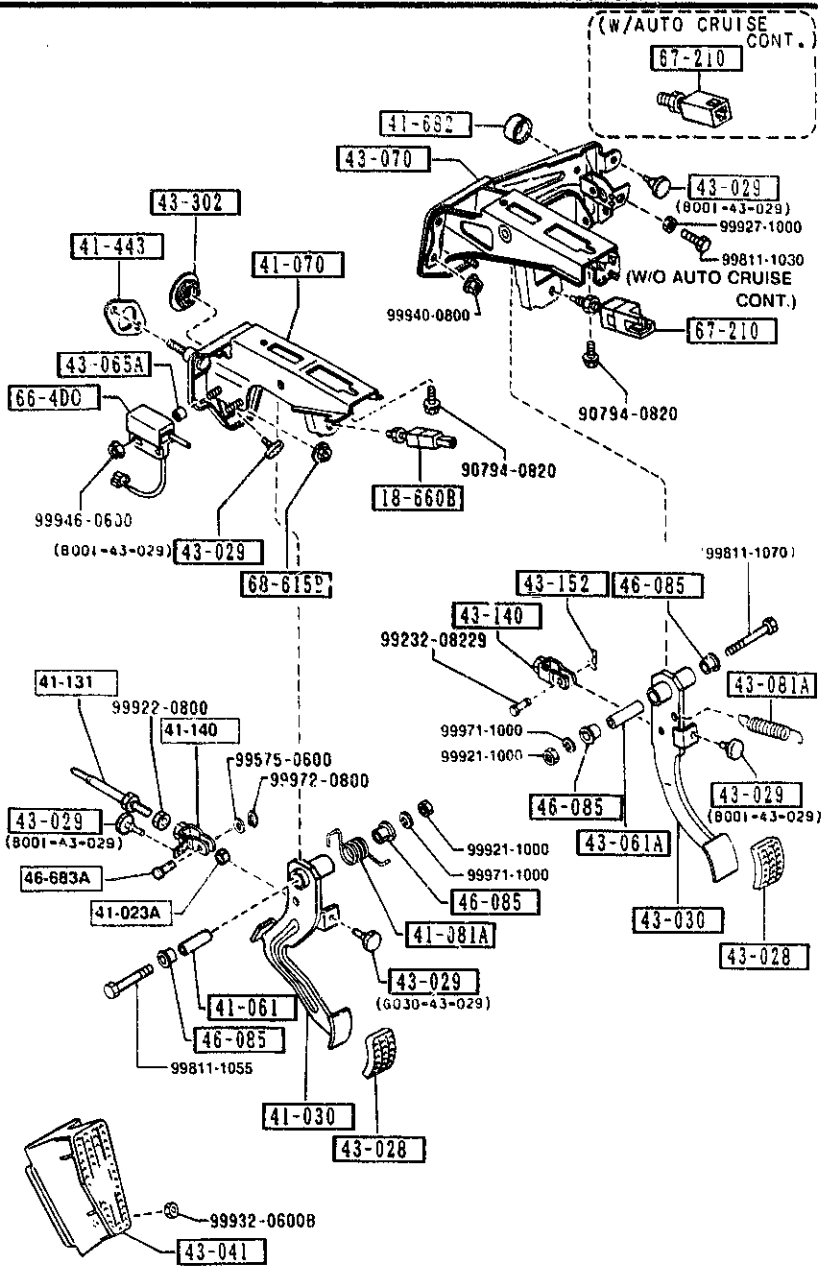
AUNA02

CAT. AUNA02-07

1993-12

1-N15

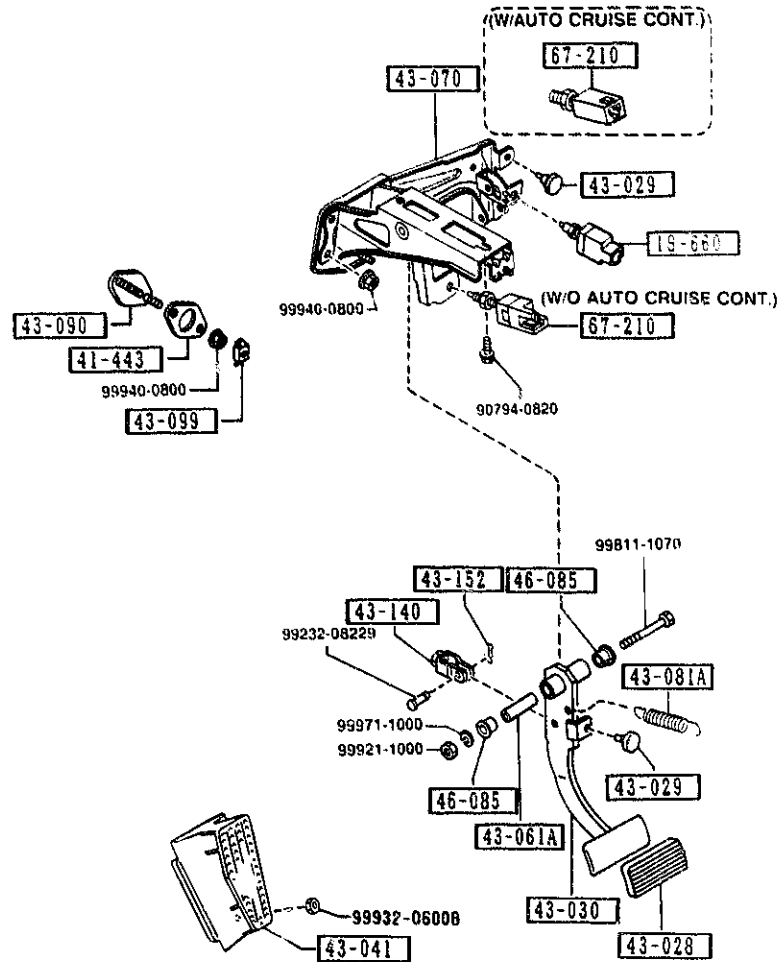
4300 CLUTCH & BRAKE PEDALS (MANUAL TRANSMISSION)



PART NO.	QTY	MODEL/RESTRICTION	MODEL/RESTRICTION	MODEL/RESTRICTION	FROM 10
67-210		SWITCH, STOP			
BR70-66-490A	1	PKG-OPT, (W/AUTO CRUISE CONT)			
B001-66-490A	1	BASE, (W/O AUTO CRUISE CONT.)			
68-615B		NUT, FLANGE-CAP			
B100-68-615	1				

4300A -1 BRAKE PEDALS (AUTOMATIC TRANSMISSION)

4300A BRAKE PEDALS (AUTOMATIC TRANSMISSION)

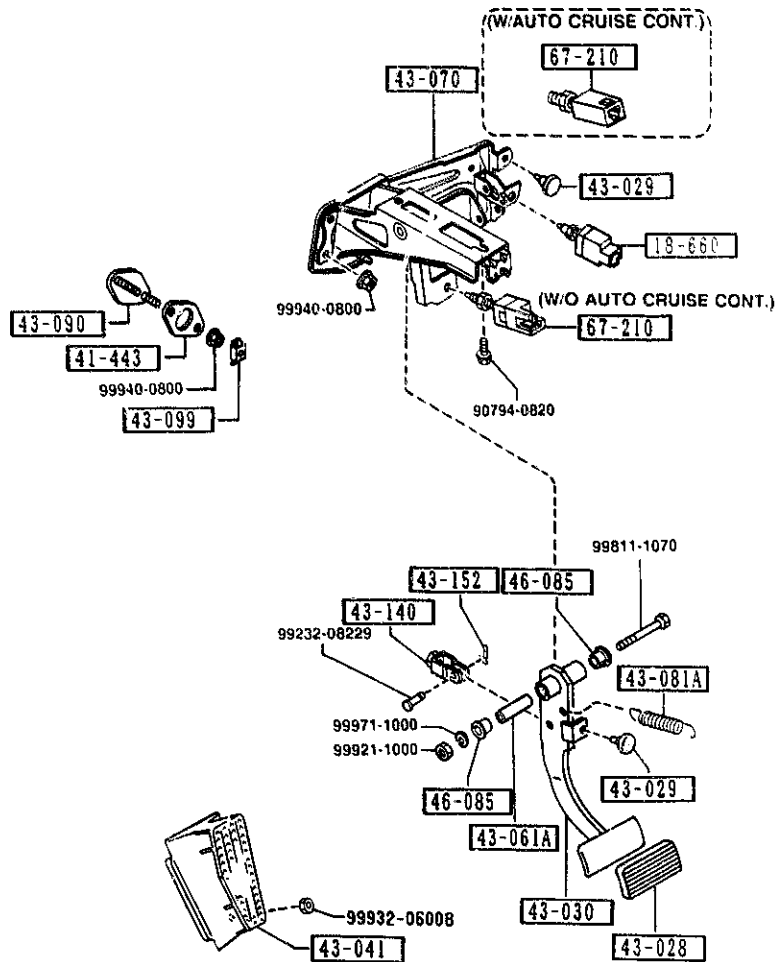


PART NO.	QTY	MODEL/RESTRICTION	MODEL/RESTRICTION	MODEL/RESTRICTION	FROM TO
18-660		SWITCH,KICK DOWN			
M118-66-470	1				
41-443		GASKET			
NA01-41-443	1				
43-028		PAD,PEDAL			
0268-43-028	1				
43-029		RUBBER,STOPPER			
B001-43-029	2	KUROISHI TEKKO			
43-030		PEDAL,BRAKE			
NA03 43-030	1				
43-041		REST,FOOT			
NA01-43-041	1				
43-061A		PIPE,PEDAL			
0866-43-062	1				
43-070		BRACKET,MASTER CYL.			
NA01-43-070A	1	BASE, (W/O AUTO CRUISE CONT.)			
NA02-43-070A	1	PKG-OPT. (W/AUTO CRUISE CONT.)			
43-081A		SPRING,RETURN-BRAKE			
B092-41-081	1				
43-090		PLATE			
NA03-43-090	1				
43-099		HOLDER,PLATE			
HF23-43-099	1				
43-140		FORK,BRAKE			
1524-43-140	1				-2620
*1524-43-141	1				2620-
2620 NA35**-330122					

1-D16

4300A -2 * BRAKE PEDALS (AUTOMATIC TRANSMISSION)

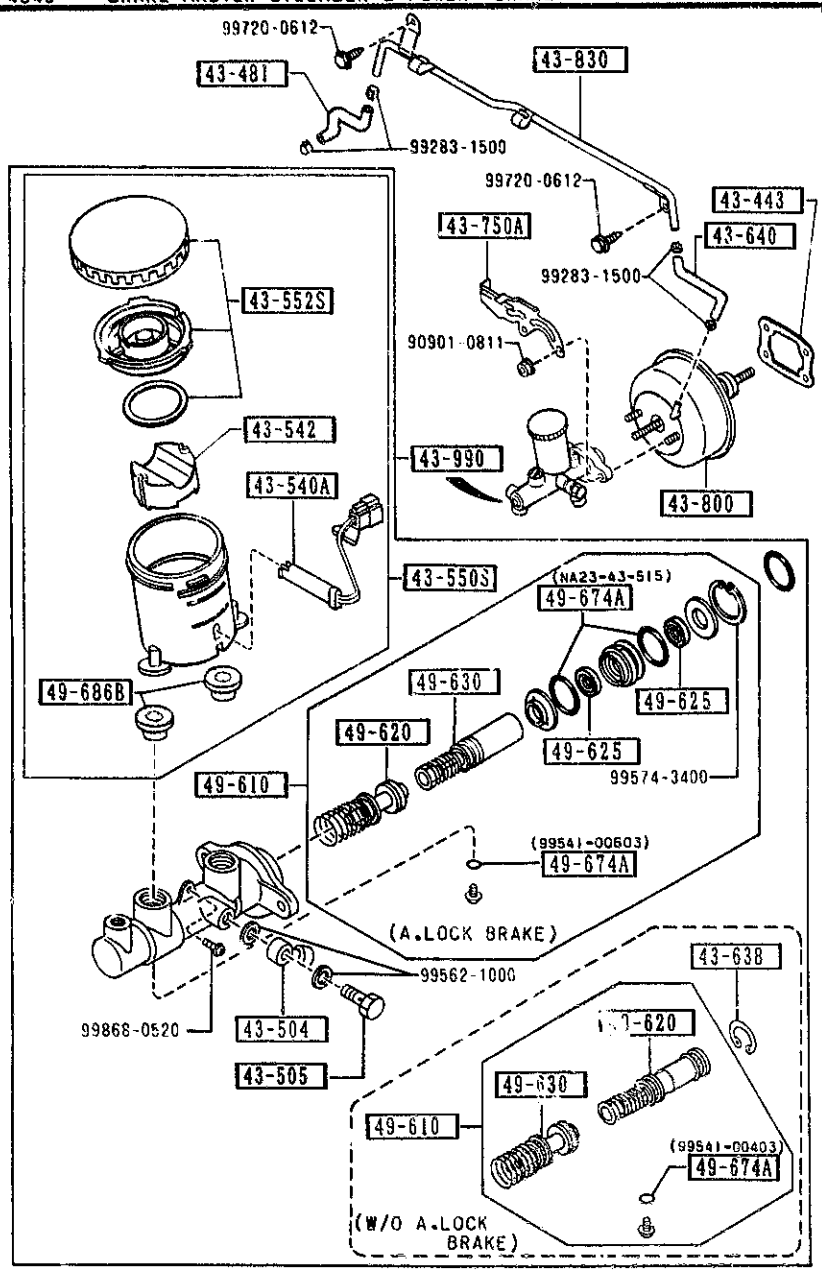
4300A BRAKE PEDALS (AUTOMATIC TRANSMISSION)



PART NO.	QTY	MODEL/RESTRICTION	MODEL/RESTRICTION	MODEL/RESTRICTION	FROM TO
43-152		PIN, SNAP			
D001-43-152	1				
46-085		BUSH			
1015-46-085	2				
67-210		SWITCH, STOP			
BR70-66-490A	1	PKG-OPT, (W/AUTO CRUISE CONT.)			
8001-66-490A	1	BASE, (W/O AUTO CRUISE CONT.)			

1-E16

4340 BRAKE MASTER CYLINDER & POWER BRAKE



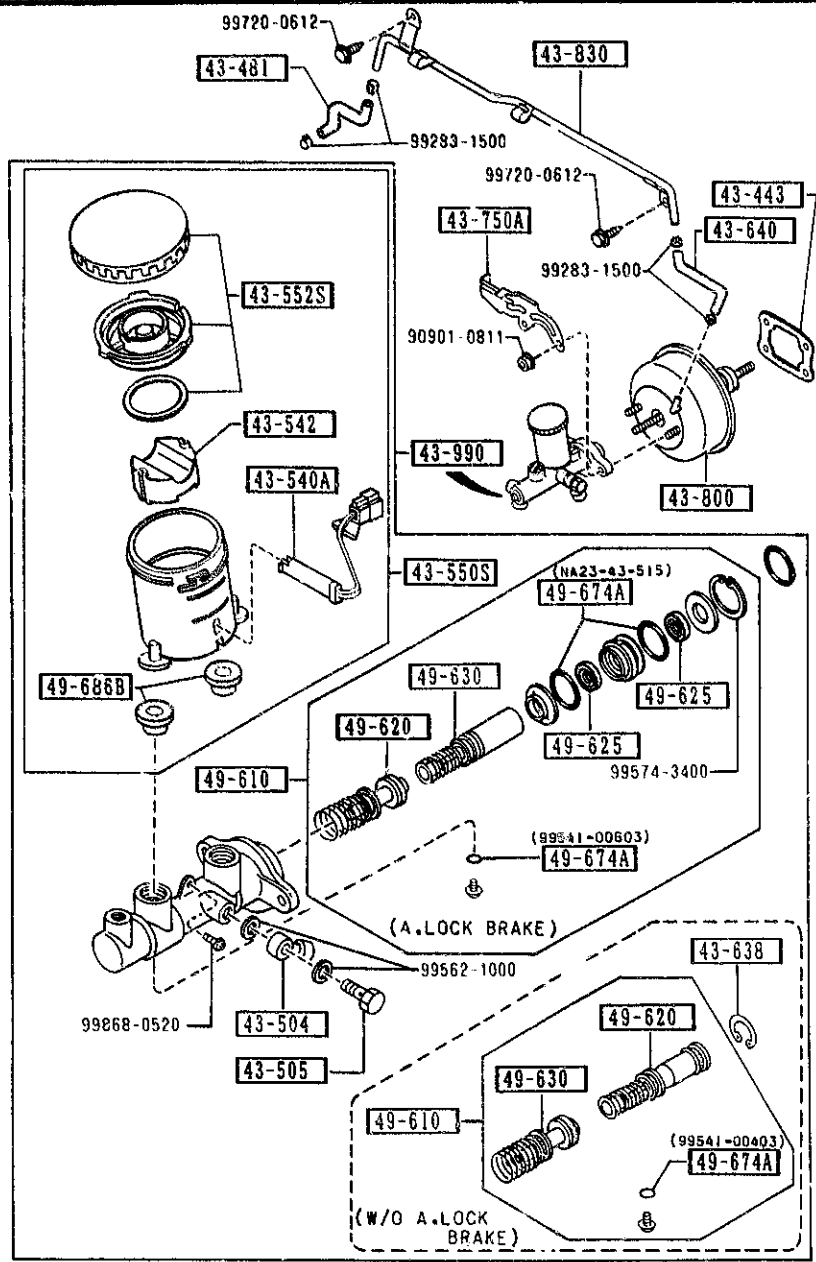
PART NO.	QTY	MODEL/RESTRICTION	MODEL/RESTRICTION	MODEL/RESTRICTION	FROM TO
43-443 H001-43-443	1	GASKET, VAC POWER AS SIST NON ASBESTOS			
43-481 NA01-43-481	1	HOSE, VACUUM			
43-504 W023-43-504	1	JOINT, PIPE			
43-505 W023-43-505	1	BOLT, CONNECTOR			
43-540A GA97-43-540	1	SENSOR, RESERVE TANK			
43-542 3597-43-542	1	FLOAT			
43-550S NA23-43-55Z	1	TANK SET, RESERVE (A. LOCK BRAKE)			
8216-49-680A	1	(W/O A. LOCK BRAKE)			
43-552S D001-49-650A	1	CAP SET, RESERVE TANK			
43-638 GA02-49-638	1	RING, RETAINING (W/O A. LOCK BRAKE)			
43-640 NA01-43-640	1	HOSE, VACUUM			
43-750A NA01-43-750	1	HOLDER, P.B. VALVE (W/O A. LOCK BRAKE)			
NA02-43-750A	1	(A. LOCK BRAKE)			
43-800 NA01-43-800	1	VACUUM POWER ASSIST (W/O A. LOCK BRAKE)			
NA23-43-800	1	(A. LOCK BRAKE)			

AUNA02

CAT. AUNA02-07

1993-12

4340 BRAKE MASTER CYLINDER & POWER BRAKE



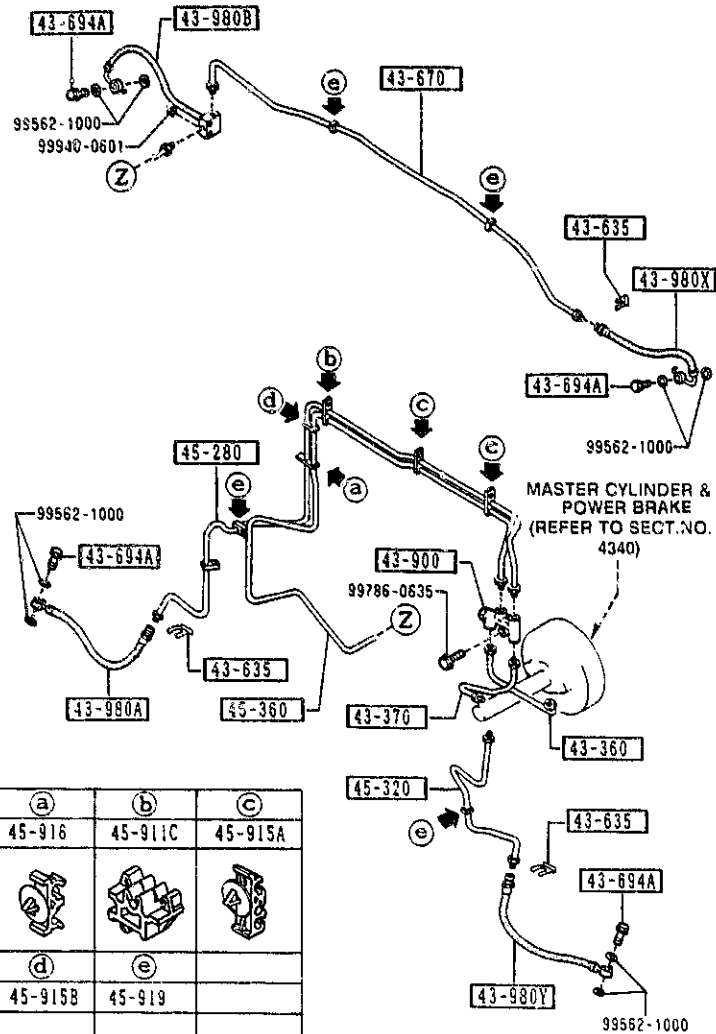
PART NO.	QTY	MODEL/RESTRICTION	MODEL/RESTRICTION	MODEL/RESTRICTION	FROM-TO
43-830		PIPE, VACUUM			
NA01-43-830A	1	(W/O A. LOCK BRAKE)			
NA23-43-830A A (NA23-43-830B)	1				-0A01
NA23-43-830B	1	(A. LOCK BRAKE)			0A01-
43-990		CYL., TANDEM MASTER			
NAY3-43-60Z	1	(A. LOCK BRAKE)			
NA01-43-60D	1	(W/O A. LOCK BRAKE)			
49-610		PARTS KIT, INN.-BRAKE			
NAY3-43-61Z	1	(A. LOCK BRAKE)			
BW0A-43-61Z	1	(W/O A. LOCK BRAKE)			
49-620		PISTON, PRIMARY			
BW0A-43-62Z	1	(W/O A. LOCK BRAKE)			
B252-49-620A	1	(A. LOCK BRAKE)			
49-625		CUP, SECONDARY			
NA23-43-625	2	(A. LOCK BRAKE)			
49-630		PISTON, FLOATING			
BW0A-43-63Z	1	(W/O A. LOCK BRAKE)			
NA23-43-63Z	1	(A. LOCK BRAKE)			
49-674A		RING, 'O'-MASTER CYL.			
NA23-43-515	2	SHINEI KOGYO (A. LOCK BRAKE)			
99541-00403	1	(W/O A. LOCK BRAKE)			
99541-00603	1	NOK (A. LOCK BRAKE)			
49-686B		BUSH, ELBOW JOINT			
0305-49-686B	2				
0A01 NA35**-213219					

AUNA02

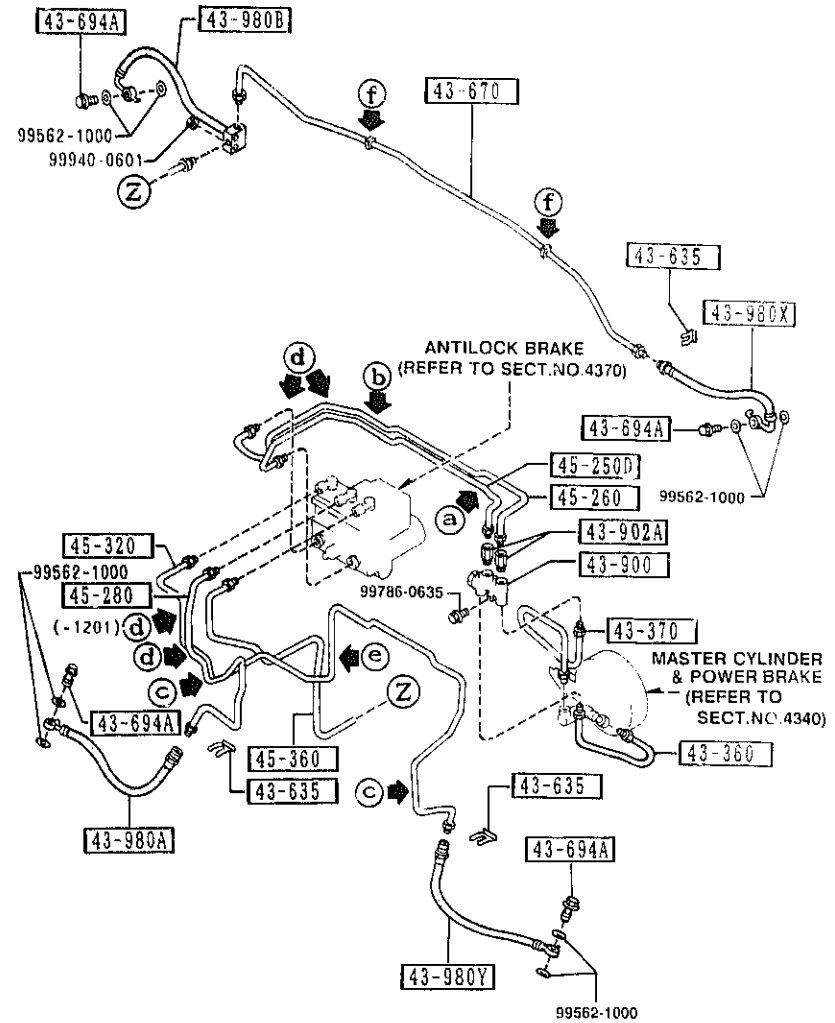
CAT. AUNA02-07

1993-12

1-G16



a	b	c
45-916	45-911C	45-915A
d	e	
45-915B	45-919	

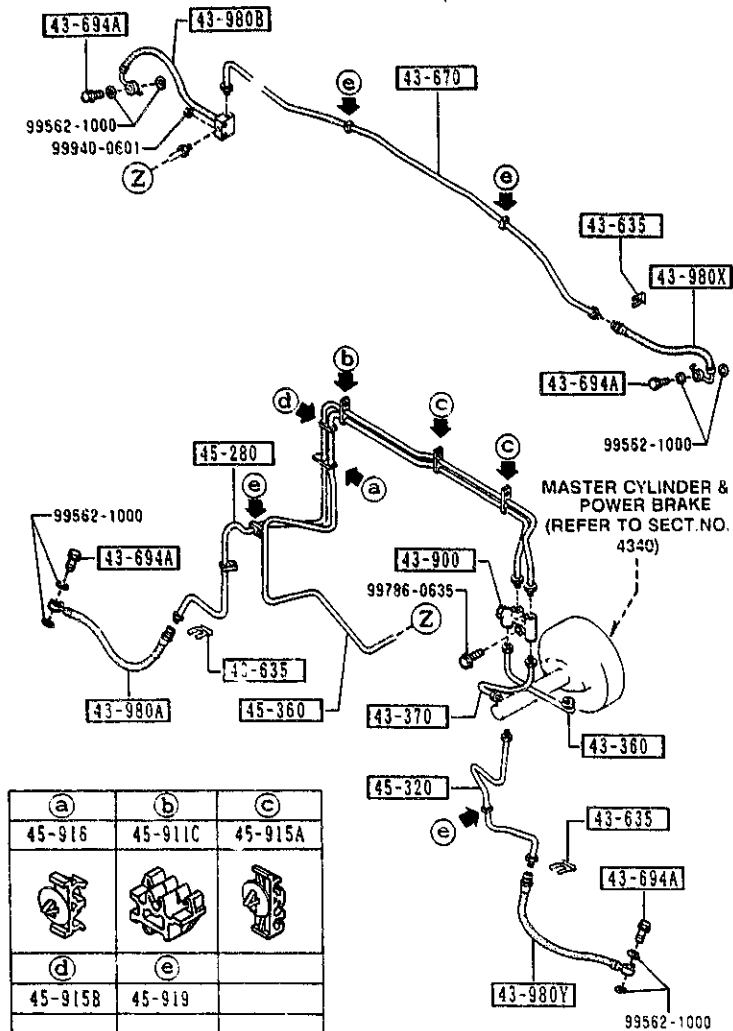


a	b	c	d	e	f
45-910E	45-920	43-607	43-919A	45-919C	45-919

(W/O A, LOCK BRAKE)

(THIS ILLUSTRATION CONSISTS OF 2 PAGES)

(1/2)



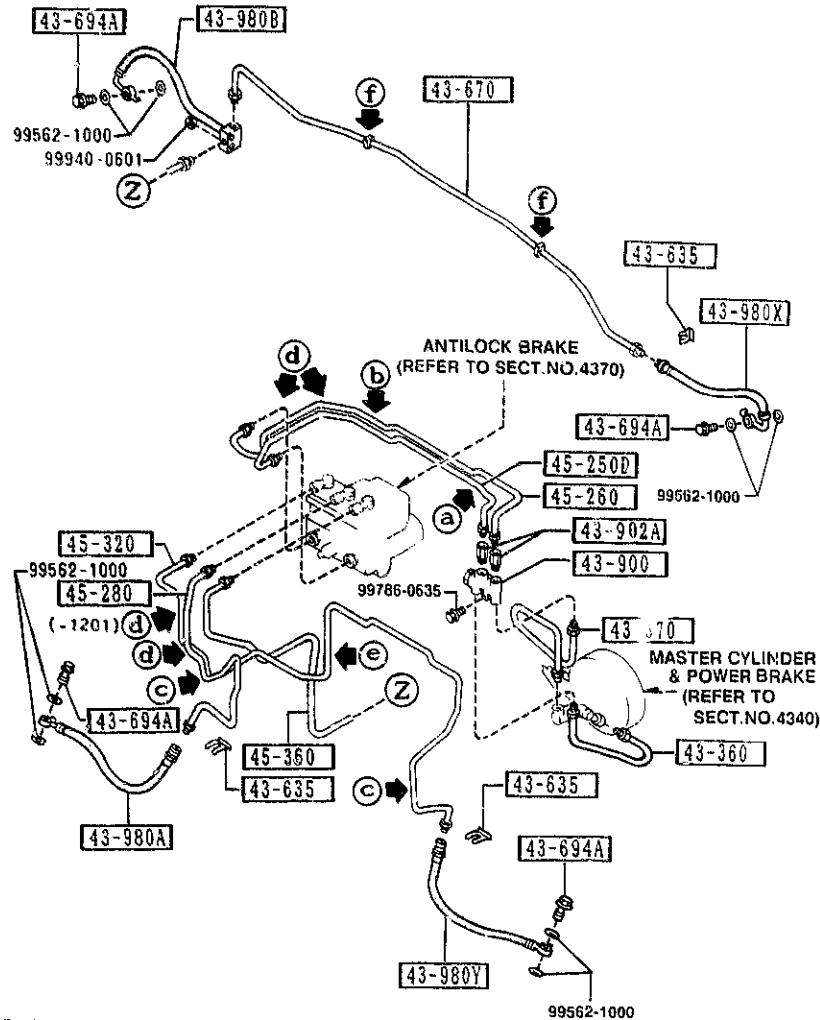
a	b	c
45-916	45-911C	45-915A
d	e	
45-9158	45-919	

PART NO.	QTY	MODEL/RESTRICTION	MODEL/RESTRICTION	MODEL/RESTRICTION	FROM-TO
43-360		PIPE, BRAKE			
NA01-43-360A	1	(W/O A. LOCK BRAKE)			
NA23-43-360A	1	(A. LOCK BRAKE)			
43-370		PIPE, BRAKE			
NA01-43-370	1	(W/O A. LOCK BRAKE)			
NA23-43-370A	1	(A. LOCK BRAKE)			
43-607		CLIP, RR BRAKE PIPE			
G309-43-607	2	(A. LOCK BRAKE)			
43-635		CLIP, FLEXIBLE HOSE			
W023-43-635	3				
43-670		PIPE, BRAKE-REAR			
NA01-43-670A	1				
43-694A		BOLT, CONNECTOR			
B001-43-694A	4				
43-900		VALVE, DUAL PROPORTIONING			
NA23-43-920A	1	(A. LOCK BRAKE)			
NA01-43-900	1	(W/O A. LOCK BRAKE)			
43-902A		RING 'O'			
NA17-43-902	2	(A. LOCK BRAKE)			
43-919A		HOLDER, BRAKE PIPE			
NA20-45-915	4	(A. LOCK BRAKE)			
NA20-45-915	3	(A. LOCK BRAKE)			
43-980A		HOSE (R), FLEXIBLE-FRT			
NA01-43-810A	1				
43-980B		HOSE (R), FLEXIBLE-RR			
NA01-43-980	1				
43-980X		HOSE (L), FLEXIBLE-RR			
NA01-43-990	1				
1201 NA35**228219					

-1201
1201-

(A, LOCK BRAKE)

(THIS ILLUSTRATION CONSISTS OF 2 PAGES)



a	b	c	d	e	f
45-910E	45-920	43-607	43-919A	45-919C	45-919

PART NO.	QTY	MODEL/RESTRICTION	MODEL/RESTRICTION	MODEL/RESTRICTION	FROM-TO
43-980Y		HOSE(L), FLEXIBLE-FRT			
NA01-43-820A	1				
45-250D		PIPE NO.1, BRAKE-FRT			
NA20-45-230C	1	(A. LOCK BRAKE)			
45-260		PIPE NO.2, BRAKE-FRT.			
NA20-45-240C	1	(A. LOCK BRAKE)			
45-230		PIPE(R), BRAKE-FRONT			
NA01-45-280B	1	(W/O A. LOCK BRAKE)			
NA20-45-280B	1	(A. LOCK BRAKE)			
45-320		PIPE(L), BRAKE-FRONT			
NA20-45-320C	1	(A. LOCK BRAKE)			
NA01-45-320B	1				-1B01
AN(NA01-45-320C)					
NA01-45-320C	1	(W/O A. LOCK BRAKE)			1B01-
45-360		PIPE NO.2, BRAKE-REAR			
NA01-45-360B	1	(W/O A. LOCK BRAKE)			
NA20-45-360D	1	(A. LOCK BRAKE)			
45-910E		HOLDER, PIPE			
NA20-45-910A	1	(A. LOCK BRAKE)			
45-911C		CLIP, PIPE			
NA01-45-911	1	(W/O A. LOCK BRAKE)			
45-915A		HOLDER, PIPE			
B001-45-915	2	(W/O A. LOCK BRAKE)			
45-915B		HOLDER, PIPE			
B001-45-915A	1	(W/O A. LOCK BRAKE)			
45-916		HOLDER, PIPE			
B001-45-916	1	(W/O A. LOCK BRAKE)			
45-919		CLIP, PIPE			
B001-45-919B	2	(A. LOCK BRAKE)			
1B01 NA35**-306993					

AUNA02

CAT. AUNA02-07

1993-12

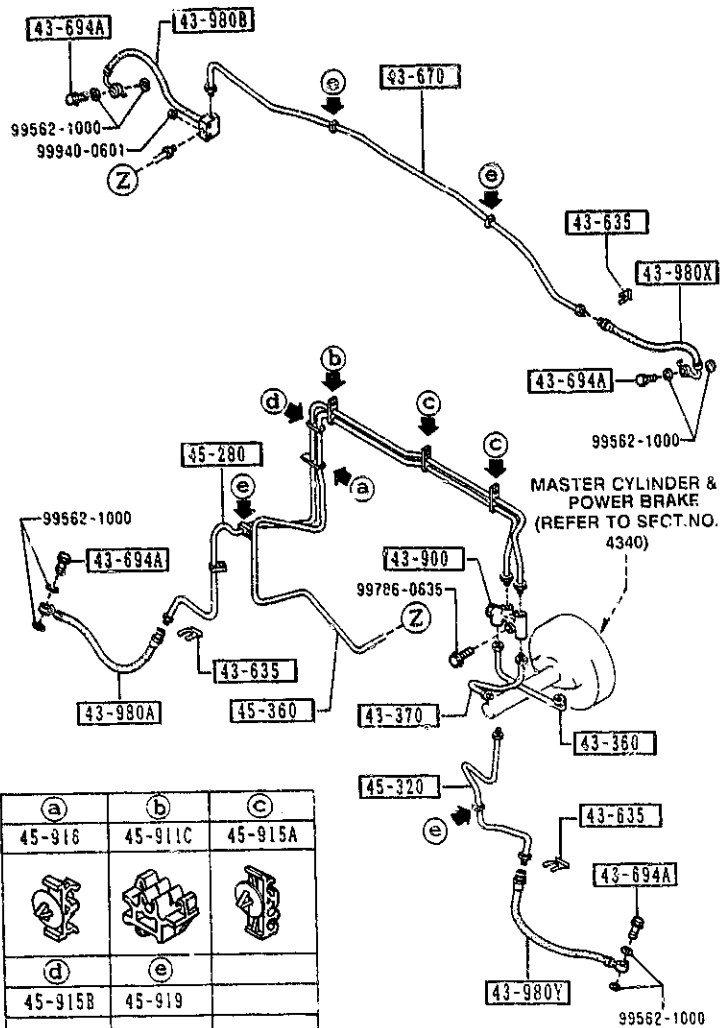
1-J16

4360 BRAKE PIPINGS
(W/O A. LOCK BRAKE)

(THIS ILLUSTRATION CONSISTS OF 2 PAGES)

4360 -3 * BRAKE PIPINGS

(1/2)



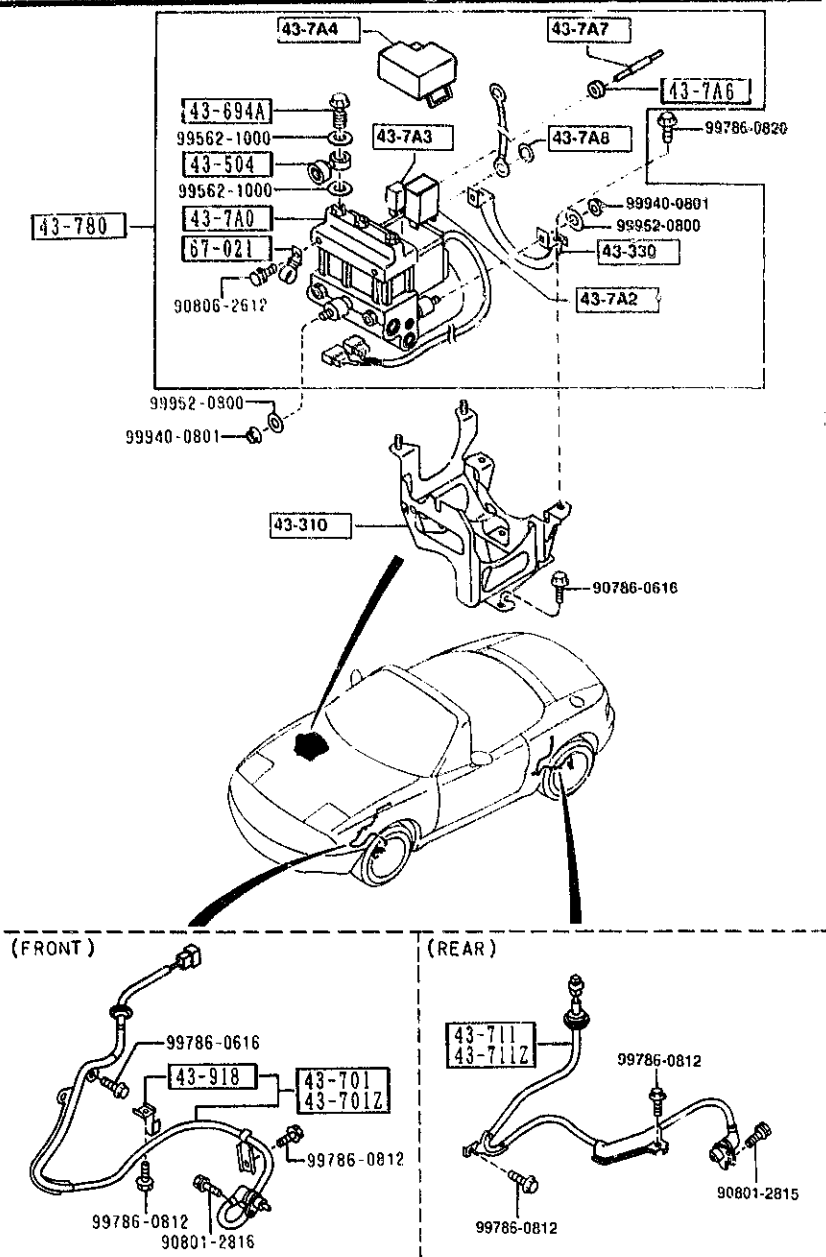
a	b	c
45-918	45-911C	45-915A
d	e	
45-915B	45-919	

PART NO.	QTY	MODEL/RESTRICTION	MODEL/RESTRICTION	MODEL/RESTRICTION	FROM TO
CONT'D BU01-45-919B	4	(W/O A. LOCK BRAKE)			
 45-919C		CLIP, PIPE			
G030-45-919	1	(A. LOCK BRAKE)			
 45-920		BRACKET			
NA20-45-920A A (NA20-45-920B)	1				-2121
NA20-45-920B	1	(A. LOCK BRAKE)			2121-

2121 NA35**-315566

1-K16

4370 ANTILOCK BRAKE SYSTEM



PART NO.	QTY	MODEL/RESTRICTION	MODEL/RESTRICTION	MODEL/RESTRICTION	FROM 10
43-310		BRACKET NO 1,A.B.S.			
NA23-43-310B	1				
43-330		BRACKET NO.5,A.B.S.			
NA23-43-330B	1				
43-504		JOINT,PIPE			
W023-43-504	3				
43-694A		BOLT,CONNECTOR			
B001-43-694A	3				
43-7A0		HYDRAULIC UNIT,A B S			
NA23-43-7A0B	1				
43-7A2		RELAY,MOTOR-HYD. UNI T			
NA23-43-7A2	1				
43-7A3		RELAY,VALVE-HYD. UNI Y			
NA23-43-7A3	1				
43-7A4		COVER'L',HYDRAULIC U NIT			
NA23-43-7A4	1				
43-7A6		RUBBER,MOUNT-HYD. UN IT			
NA23-43-7A6	1				
43-7A7		STUD,HEX-HYD. UNIT			
NA23-43-7A7	1				
43-7A8		WASHER, HYD. UNIT			
NA23-43-7A8	1				
43-701		SENSOR(R),FRT-A.B.S.			
NA23-43-70XB A (NA23-43-70XD)	1				-0B01
NA23-43-70XD	1				0B01-
43-701Z		SENSOR(L),FRT-A.B.S.			
NA23-43-73XB A (NA23-43-73XD)	1				-0B01
0B01 NA35**217311					

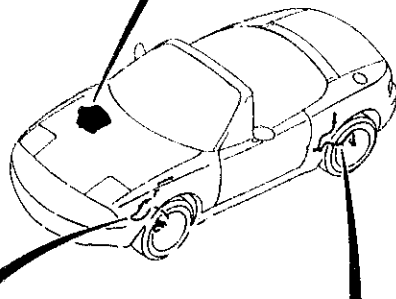
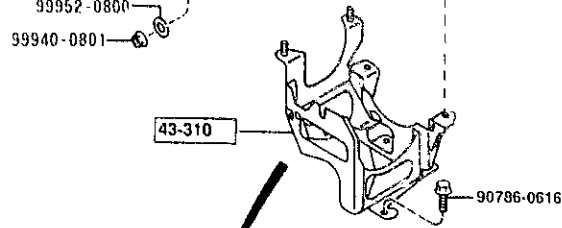
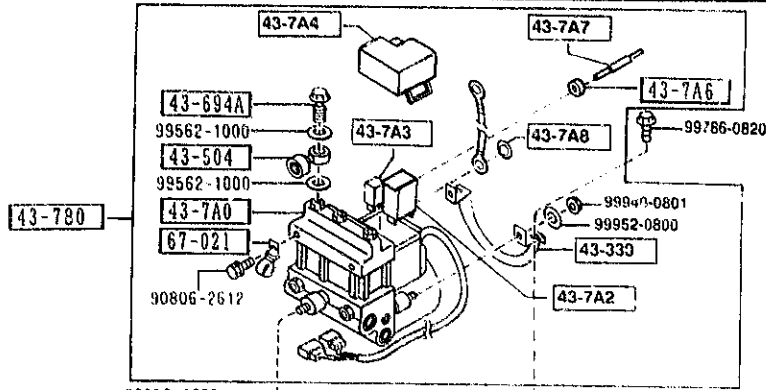
AUNA02

CAT. AUNA02-07

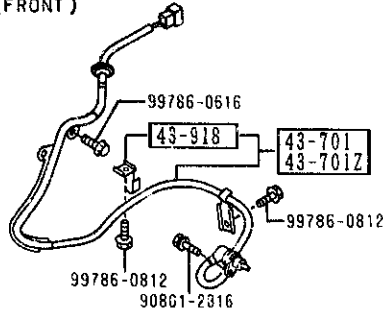
1993-12

4370 -2 * ANTILOCK BRAKE SYSTEM

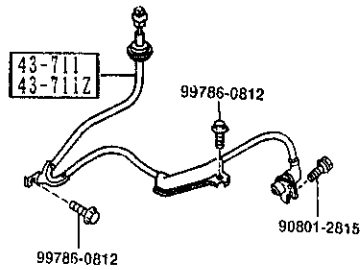
4370 ANTILOCK BRAKE SYSTEM



(FRONT)



(REAR)



AUNA02

PART NO.	QTY	MODEL/RESTRICTION	MODEL/RESTRICTION	MODEL/RESTRICTION	FROM TO
CONT'D NA23-43-73XD	1				0801-
43-711		SENSOR<R>,RR A.B.S.			
NA23-43-71YB	1				
43-711Z		SENSOR<L>,RR-A.B.S.			
NA23-43-72YB	1				
43-780		ANTILOCK BRAKE			
NA23-43-780D AN(NA23-43-780E)	1				-0901
NA23-43-780E	1				0901-
43-918		CLIP, SENSOR HARNESS			
NA23-43-705	2				
67-021		CLIP			
BE32-67-021	2				
0901 NA35**~208969					
0801 NA35**~217311					

CAT. AUNA02-07

1993-12

1-M16